

THIS IS HOME

COSTA NOVA FALL HOLIDAYS 2025



COSTA NOVA
PORTUGAL



COSTA NOVA FALL HOLIDAYS 2025

CHAPTER 1

Notes on *Autumn*

Returning home from our perfect summer dream, we find comfort in life's quiet details. This autumn, we invite you to discover our favorite tableware collections, along with new seasonal additions, crafted to celebrate the beauty of slow living.

STORIES

Lazy day, <i>Sweet September</i>	08
Coffee Story <i>at home</i>	18
All those weekend <i>breakfasts</i>	26
Slow living <i>mornings</i> at home	36
Lunch at <i>Cervejaria Costa Nova</i>	46
Kitchen in <i>the City</i>	50

CHAPTER 2

The Winter Chapter

In winter's quiet, comfort lives in a warm home and a table set with care. Whether in the city or a cozy retreat, the kitchen becomes our hearth — where time slows and moments are shared.

STORIES

Winter Tables

<i>A Return to Comfort</i>	60
Embracing the season's <i>Warm Colors</i>	70
Weekends in the <i>City Loft</i>	76
Escapes to the <i>Countryside</i>	82
The Winter Kitchen: <i>Warm Edit</i>	90

CHAPTER 3

Season *To Gather*

The end of the year invites us to refocus on what truly matters: the warmth of home, the closeness of family, and the joy of the season. Our tablescape suggestions capture the magic of these festive moments, inspiring the most precious times shared with loved ones.

STORIES

The Spirit of <i>Gratitude</i>	104
The Magic of <i>Christmas' Eve</i>	118
The <i>Apéro hour</i>	130
Christmas Morning <i>The Anticipation</i>	134
The Promise of <i>Midnight</i>	144
The First Day of a <i>New Year</i>	156



Arenito

New Dinnerware

New dinnerware added to the Arenito collection, available in six reactive-glazed, soothing colors.

PAGE 8 AND 60



INTRODUCING

Pacifica New Color: Terracotta

Pacifica introduces a new color to its story — an earthy terracotta that brings warmth to the table.

PAGE 36



Silvina in Terracotta & White

Inspired by the 16th-century naturalistic patterns of Bernard Palissy, this collection is versatile, perfect as both serveware and dinnerware.

PAGE 104



Pacifica Christmas Trees

A curated selection of pieces featuring tree motifs, designed to complement your favorite tableware.

PAGE 134



Resonance in White & White-Gold

New additions to COSTA NOVA's inaugural porcelain collection, designed by Carsten Gollnick.

PAGE 144

Meet the Designers



Torres Euracini

A Portuguese designer from Póvoa de Varzim with decades of experience in ceramics. With a degree in Industrial Design and specialized training, he began his career in the 1990s. His designs, primarily for COSTA NOVA and the Costa Nova Industria Group, are renowned for their innovation, creativity, and sustainability. Loved worldwide, they have transformed the ceramics industry.



Carsten Gollnick

Carsten Gollnick, born in 1966, is a German designer who has operated his own studio near Berlin since 1997. His globally recognized portfolio spans a wide range of product and interior designs, from lighting objects to tableware collections. For COSTA NOVA, Gollnick designed the Nótos, Âmbar, Coastland, and Resonance collections, showcasing his innovation and mastery in creating sophisticated, timeless pieces.



Christian Tortu

A French designer deeply inspired by the wild beauty of nature. His designs, influenced by his upbringing in the Anjou region, reflect the untamed essence of the natural world. Tortu's work, ranging from floral arrangements to scenography, has been celebrated internationally, including at Cannes and for fashion shows with Chanel and Dior. Riviera and Marrakesh are among his creations for COSTA NOVA.

Fall and winter invite us home, to slower rhythms, thoughtful rituals, and the comfort of togetherness. It's a season to reconnect with what matters most: the scent of morning coffee, the warmth of a shared meal, the joy of gathering. Our table becomes the heart of these moments, from daily rituals to festive celebrations. The holidays arrive wrapped in light and laughter, inviting us to celebrate in the spirit of slow... with intention, presence, and joy savored moment by moment. And after we reconnect with each other, we pause to give thanks, saying grace, remembering those we hold dear, and embracing the memories that warm us as we welcome a new year. With every setting, our tableware becomes part of that story — elevating the everyday and honoring the beauty of coming together.

Notes on

08

Lazy days, *Sweet September*

18

Coffee Story *at home*

26

All those weekend *breakfasts*

36

Slow living *mornings* at home

46

Lunch at *Cervejaria Costa Nova*

50

Kitchen in *the City*

n *Autumn*

Lazy days, *Sweet September*

NEW INTRODUCTION
ARENITO COLLECTION NEW DINNERWARE

As we return home from our busy summer vacations, it's time to reconnect — with our homes, with ourselves, and with the quiet rhythm of autumn, where life slows to the gentle pace of falling leaves.



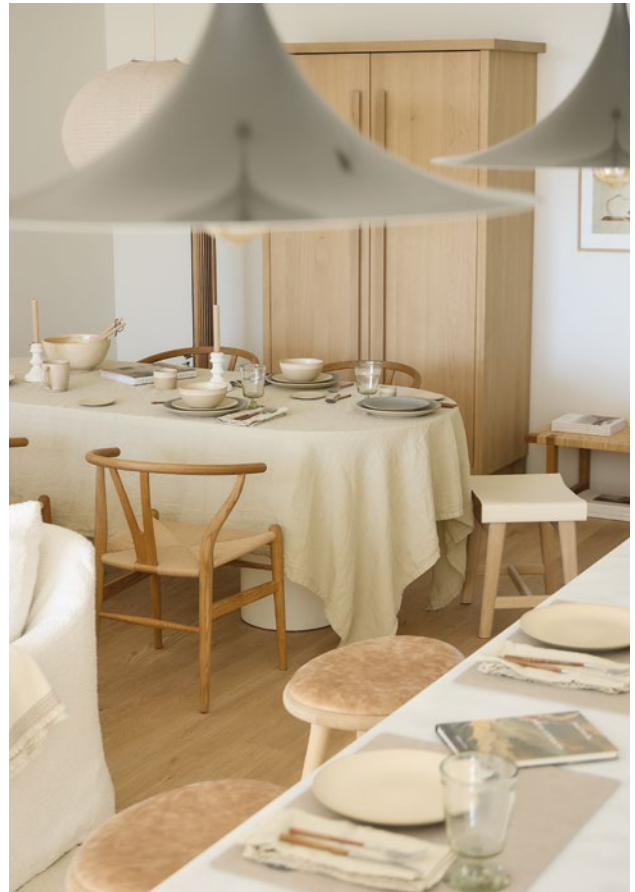




Opposite page: Arenito tableware in sage green and champagne yellow. **Above, clockwise:** Arenito poke bowl 19 cm | 7" in sage green. Arenito lungo cup 20 cl | 7 fl oz in champagne yellow. Arenito dinner plate 28 cm | 11" in sage green, salad/dessert plate 22 cm | 9" and latte bowl 16 cm | 6" in champagne yellow with Mito flatware in wood.

This season, fall brings thoughtful new additions to the **Arenito** Collection — a beautiful set of plates designed to complement our existing coffee cups and bowls. A celebration of simplicity, warmth, and the art of slowing down.





Opposite page: **Arenito** dinner plate 28 cm | 11" in olive green and latte bowl 16 cm | 6" in charcoal grey. **Arenito** dinner plate 28 cm | 11" in olive green and appetizer plate 13 cm | 5" in champagne yellow, **Saga** flatware in black matte, **Gomos** water glass 28 cl | 10 fl oz in smoked brown, and **Maria** napkin in khaki. **Above, left to right:** **Arenito** salad/dessert plate 22 cm | 9" in champagne yellow. **Arenito** tableware in sage green and champagne yellow.



SHOP THE LOOK

The Feel of Autumn Essentials for the Laid-Back Season

From slow mornings with coffee to candlelit dinners at home, discover pieces designed to make fall feel even more like you.



-
1. **Nôtos** teapot w/infuser 50 cl | 17 fl oz in dune path.
 2. **Grespresso** lungo cup/sugar bowl 19 cl | 6 fl oz in grey.
 3. **Carolina** napkin in caramel and white-caramel.
 4. **Livia** serving bowl 26 cm | 10" in champagne yellow.
 5. **Mito** flatware 5 pieces in wood.
 6. **Arenito** salad/dessert plate 22 cm | 9" in sage green.
 7. **Arenito** latte cup 36 cl | 12 fl oz in sage green.
 8. **Grespresso** oval saucer 20 cm | 8" in white.
 9. **Grespresso** creamer 21 cl | 7 fl oz in white.
 10. **Arenito** latte bowl 16 cm | 6" in champagne yellow.
 11. **Riviera** pitcher 165 cl | 56 fl oz in sable noir.
 12. **Gomos** water glass 28 cl | 10 fl oz in smoked brown.

Arenito in Champagne Yellow



Dinner plate 28 cm | 11"

2RTP282-CHM

D27.5 H3.2 cm
D10 7/8" H1 1/4"

[6]



Salad/dessert plate 22 cm | 9"

2RTP222-CHM

D21.9 H2.5 cm
D8 5/8" H1"

[6]



Appetizer plate 13 cm | 5"

2RTP131-CHM

D12.5 H1.2 cm
D4 7/8" H1/2"

[6]



Poke bowl 19 cm | 7"

2RTS192-CHM

D18.5 H7 cm | 99 cl
D7 1/4" H2 3/4" | 33 1/2 fl oz

[6]



Latte bowl 16 cm | 6"

2LNS161-CHM

D15.8 H7.7 cm | 67 cl
D6 1/4" H3" | 22 5/8 fl oz

[6]



Mug 44 cl | 15 fl oz

2LNC132-CHM

13.4 x 9.7 H10.5 cm | 44 cl
5 1/4" x 3 7/8" H4 1/8" | 14 7/8 fl oz

[6]



Latte cup 36 cl | 12 fl oz

2GOC101-CHM

D10.5 H7.6 cm | 36.3 cl
D4 1/8" H3" | 12 1/4 fl oz

[6]



Lungo cup 20 cl | 7 fl oz

2LNC092-CHM

D8.7 H6.6 cm | 20 cl
D3 3/8" H2 5/8" | 6 3/4 fl oz

[6]



Espresso cup 7 cl | 2 fl oz

2LNC062-CHM

D6 H4.9 cm | 6.5 cl
D2 3/8" H1 7/8" | 2 1/4 fl oz

[6]

ALSO AVAILABLE IN

Discover Arenito's full range at costanova.com



● Charcoal Grey (CHR)
— Reactive Dark Grey —



● Sage Green (GRN)
— Reactive Green —



● Olive Green (OLV)
— Reactive Brown —



● Mauve Rose (PNK)
— Reactive Pink —



● Aqua (AQU)
— Reactive Light Green —







Coffee Story *at home*

There's nothing more homely than the smell of fresh coffee. At COSTA NOVA, we hold a deep appreciation for coffee and its cultural significance around the world. That's why we've created a diverse collection of coffee cups in a variety of shapes, colors, and styles — designed to honor every coffee moment.



Grespresso New Introductions



Lungo cup/Sugar bowl
19 cl | 7 fl oz
 O LSC081-WHI

D8 H7.5 cm | 19.1 cl
 D3 1/8" H3" | 6 1/2 fl oz
 [6]



Creamer 21 cl | 7 fl oz
 O LSZ131-WHI LSZ131-AQA
 LSZ131-SNR LSZ131-DEN

12.7 x 8.2 H8.4 cm | 20.5 cl
 5" x 3 1/4" H3 1/4" | 6 7/8 fl oz
 [1]



Oval saucer 20 cm | 8"
 O LSP201-WHI LSP201-AQA
 LSP201-SNR LSP201-DEN

19.7 x 13.5 H1.3 cm
 7 3/4" x 5 3/8" H1/2"
 [6]



Appetizer plate 13 cm | 5"
 O LSP133-WHI LSP133-AQA
 LSP133-SNR LSP133-DEN

D12.7 H2.6 cm
 D5" H1"
 [6]



Capsule dispenser 15 cm | 6"
 O LSX182B-WHI

D16.3 H14.6 cm | 141.2 cl
 D6 3/8" H5 3/4" | 47 3/4 fl oz
 [1]

Discover Grespresso's full range at costanova.com

LUNGO CUP/SUGAR BOWL ALSO AVAILABLE IN



● Grey (GRY)
 — Reactive Grey —



● Soft Pink (PNK)
 — Reactive Pink —



● Aqua (AQA)
 — Reactive Light Green —



● Yellow (YLW)
 — Reactive Yellow —



● Sunset Red (SNR)
 — Reactive Orange —



● Red (RED)
 — Reactive Red —



● Denim (DEN)
 — Reactive Blue —



● Hunter Green (HNG)
 — Reactive Green —



● Black (BLK)
 — Reactive Black —



● Turquoise (TRQ)
 — Reactive Turquoise —



Whether you're starting your day with a robust espresso or enjoying a leisurely lungo, COSTA NOVA offers the perfect companions for your coffee moments. This season, we've expanded our coffee assortment with new additions to the **Grespresso** collection — practical coffee pieces that will look perfect in your coffee station and make every cup feel special.

Above: Beja coffee cup and saucer 8 cl | 3 fl oz in white & red. **Grespresso** creamer 21 cl | 7 fl oz, oval saucer 20 cm | 8" and espresso cup 7 cl | 2 fl oz in white.



1.



2.



3.



4.



5.



6.



7.



8.



9.



10.



11.



12.

THE SELECTION

& Other Coffee cups...

1. Roda espresso cup 8 cl | 3 fl oz and espresso saucer 11 cm | 4" in ardósia. **2. Alentejo** coffee cup and saucer 9 cl | 3 fl oz in white. **3. Madeira** coffee cup and saucer 8 cl | 3 fl oz in grey. **4. Vermont** coffee cup and saucer 7 cl | 2 fl oz in cream. **5. Pearl** coffee cup and saucer 9 cl | 3 fl oz in white. **6. Madeira Harvest** coffee cup and saucer 9 cl | 3 fl oz in vanilla crème. **7. Lagoa** coffee cup and saucer 9 cl | 3 fl oz in metal. **8. Friso** coffee cup and saucer 9 cl | 3 fl oz in white. **9. Pacifica** coffee cup and saucer 7 cl | 2 fl oz in chestnut. **10. Beja** coffee cup and saucer 8 cl | 3 fl oz in white & red. **11. Impressions** coffee cup and saucer 9 cl | 3 fl oz in white. **12. Riviera** coffee cup and saucer 8 cl | 3 fl oz in fôrets.



1. Grespresso espresso cup 7 cl | 2 fl oz in white. **2. Grespresso** lungo cup 19 cl | 6 fl oz in black. **3. Arenito** espresso cup 7 cl | 2 fl oz in charcoal grey. **4. Grespresso Nature** espresso cup 7 cl | 2 fl oz in sand-white. **5. Grespresso Ecogres** espresso cup 7 cl | 2 fl oz in white colombia. **6. Arenito** lungo cup 20 cl | 7 fl oz in olive green. **7. Grespresso Nature** espresso cup 7 cl | 2 fl oz in slate-white. **8. Grespresso Nature** lungo cup 19 cl | 6 fl oz in natural-white. **9. Nótos** cup 7 cl | 3 fl oz in dune path. **10. Nótos** cup 16 cl | 5 fl oz in dune path. **11. Nótos** cup 27 cl | 9 fl oz in dune path. **12. Poterie** lungo cup 19 cl | 7 fl oz in mocha.







All those weekend *breakfasts*

Before the house awakens, a quiet stillness invites reflection and peace. Whether savoring a moment of solitude or anticipating the gentle stirrings of family, breakfast (and the act of preparing it) becomes a serene ritual, a soft beginning that gently ushers us into a new day.



Embracing the quietude of early morning

In these early hours, your favorite cup and bowl are your companions, helping you start the day with calm and focus.

As life begins to stir and the pace quickens, these peaceful moments become essential. Rising before the rest of the house offers a quiet pause, whether savoring breakfast alone or thoughtfully setting the table for your family. A simple, grounding ritual that brings calm, clarity, and presence to all that follows.

Roda and **Livia** are two of our favorite collections for these mindful breakfast moments.

Above, left to right: **Roda** mug 33 cl | 11 fl oz in bianca. **Roda** soup/cereal bowl 16 cm | 6" in bianca with **Saga** spoon in matte. **Opposite page:** **Livia** tableware in white and matte black.







Opposite page: Nótos tableware in dune path. **Above, clockwise:** Arenito mug 44 cl | 15 fl oz in champagne yellow, olive green and charcoal grey. Madeira Harvest tableware. Beja round ramekin 9 cm | 4" in white & red.



Sometimes, on weekends, a little laziness is just part of living slow — enjoying time simply for what it is. Breakfast blends into lunch, and brunch becomes a cozy, unrushed meal shared with loved ones. The **Roda** and **Pacifica** collections are perfect for those who appreciate unhurried moments at the table.

Above, top to bottom: **Roda** tableware in bianca. **Pacifica** dinner plate 28 cm | 11" in vanilla, christmas tree appetizer plate 16 cm | 6", mug 33 cl | 11 fl oz in seed grey with **Mito** flatware in black. **Opposite page:** **Pacifica** salad/dessert plate 22 cm | 9" and soup/cereal bowl 15 cm | 6" in terracotta with **Pacifica** flatware in brushed.







THE SELECTION

Our mug selection for big lattes

1. Pearl mug 37 cl | 13 fl oz in cream. **2. Luzia** mug 34 cl | 11 fl oz in cloud white. **3. Madeira** mug 44 cl | 15 fl oz in grey. **4. Livia** mug 36 cl | 12 fl oz in white. **5. Lagoa** mug 31 cl | 11 fl oz in metal. **6. Friso** mug 41 cl | 14 fl oz in white. **7. Pacifica** mug 33 cl | 11 fl oz in vanilla. **8. Fontana** mug 40 cl | 14 fl oz in white. **9. Marrakesh** mug 44 cl | 15 fl oz in sable blanc. **10. Beja** mug 36 cl | 12 fl oz in white & red. **11. Stacked Organic** mug 36 cl | 12 fl oz in cremini. **12. Poterie** mug 38 cl | 13 fl oz in mocha.

Slow living *mornings* at home

NEW INTRODUCTION
PACIFICA COLLECTION NEW COLOR: TERRACOTTA

When the moment allows, set a serene table — even if just for two —
and let the ritual of a mindful meal unfold in gentle company.
We present **Pacifica** in warm terracotta, a timeless color that evokes
earthy elegance and quiet celebration. A perfect companion for
unhurried meals and meaningful conversation.







Elevating everyday rituals

The **Pacifica** collection is an ode to effortless elegance. With its soft silhouettes and a palette rooted in nature, Pacifica brings a grounded, lived-in beauty to any setting. From delicate bowls to generous serving pieces, the collection offers a thoughtful variety of forms, inviting layers of texture and tone to the table. Now introduced in a rich **terracotta** tone, Pacifica welcomes a new chapter — one that speaks to the warmth and depth of autumn. This earthy addition expands the collection's harmonious color story, evoking the season's quiet comforts and golden light.

Opposite page: **Pacifica** dinner plate 27 cm | 11" in terracotta with **Pacifica** flatware in brushed, **Margarida** wine glass 34 cl | 12 fl oz in green, and **Maria** napkin in khaki. **Above:** **Pacifica** serving bowl 25 cm | 10" in terracotta with **Beechwood** spoon and fork.



Above, clockwise: **Pacifica** footed plate 27 cm | 11" in chestnut. **Pacifica** mug 33 cl | 11 fl oz in terracotta. **Pacifica** oval platter 41 cm | 16" in terracotta with **Arenito** lungo cup 20 cl | 7 fl oz in champagne yellow. **Pacifica** salad/dessert plate 22 cm | 9" and soup/cereal bowl 15 cm | 6" in terracotta, pitcher 164 cl | 55 fl oz and tea cup and saucer 22 cl | 7 fl oz in vanilla, and coffee cup and saucer 7 cl | 2 fl oz in chestnut. **Opposite page:** **Pacifica** tableware with **Pacifica** flatware in brushed.





SHOP THE LOOK

The heart of the table

Whether paired with other tableware, blended with existing colors, or styled on its own, Pacifica in terracotta sets a soulful tone for gatherings both simple and special.



1. Pacifica flatware 5 pieces in brushed. **2. Margarida** tumbler 67 cl | 23 fl oz and 38 cl | 13 fl oz in green. **3. Joana** placemat in white-black. **4. Pacifica** tea cup and saucer 22 cl | 7 fl oz in chestnut. **5. Pacifica** oval platter 41 cm | 16" in chestnut. **6. Silvina** centerpiece 27 cm | 11" in fennel white. **7. Pacifica** pitcher 164 cl | 55 fl oz in vanilla. **8. Silvina** salad/dessert plate 23 cm | 9" in terracotta. **9. Silvina** bowl 17 cm | 7" in terracotta.



Pacifica in Terracotta



Dinner plate 27 cm | 11"
SOP271-TRC

D27.3 H2.8 cm
D10 7/8" H1 1/8"
[6]



Salad/dessert plate 22 cm | 9"
SOP231-TRC

D22.4 H2.5 cm
D8 7/8" H1"
[6]



Appetizer plate 16 cm | 6"
SOP161-TRC

D16 H2.2 cm
D6 1/4" H7/8"
[6]



Soup/pasta bowl 22 cm | 9"
XOP223-TRC

D22.1 H5 cm | 99 cl
D8 3/4" H2" | 33 1/2 fl oz
[6]



Soup/cereal bowl 15 cm | 6"
XOS151-TRC

D15.3 H6.3 cm | 62.5 cl
D6" H2 1/2" | 21 1/8 fl oz
[6]



Fruit bowl 12 cm | 5"
XOS121-TRC

D12.1 H6.2 cm | 31.8 cl
D4 3/4" H2 1/2" | 10 3/4 fl oz
[6]



Mug 33 cl | 11 fl oz
XOC121-TRC
11.8 x 8.8 H9.1 cm | 33 cl
4 5/8" x 3 1/2" H3 5/8" | 11 1/8 fl oz
[6]



Oval platter 41 cm | 16"
SOA411-TRC

40.8 x 26.3 H4.5 cm
16 1/8" x 10 3/8" H1 3/4"
[1]



Serving bowl 32 cm | 13"
XOS321-TRC

D31.9 H6.3 cm | 305.8 cl
D12 1/2" H2 1/2" | 103 3/8 fl oz
[1]



Serving bowl 25 cm | 10"
XOS251-TRC

D25.1 H10.1 cm | 300.5 cl
D9 7/8" H4" | 101 5/8 fl oz
[1]

ALSO AVAILABLE IN

Meet the Christmas Tree on page 142. Discover Pacifica's full range at costanova.com



● Vanilla (VAN)
— Beige —



● Christmas Tree (CHT)
— Beige —



○ Monterosa (CRC)
— Beige & Brown —



○ Salt (SAL)
— White —



● Marshmallow (MRS)
— Pink —



● Oyster Grey (OYS)
— Grey —



● Chestnut (CHS)
— Light Brown —



● Artichoke (ART)
— Green —



● Seed Grey (SEE)
— Grey —



● Cayenne (CAY)
— Brick Red —

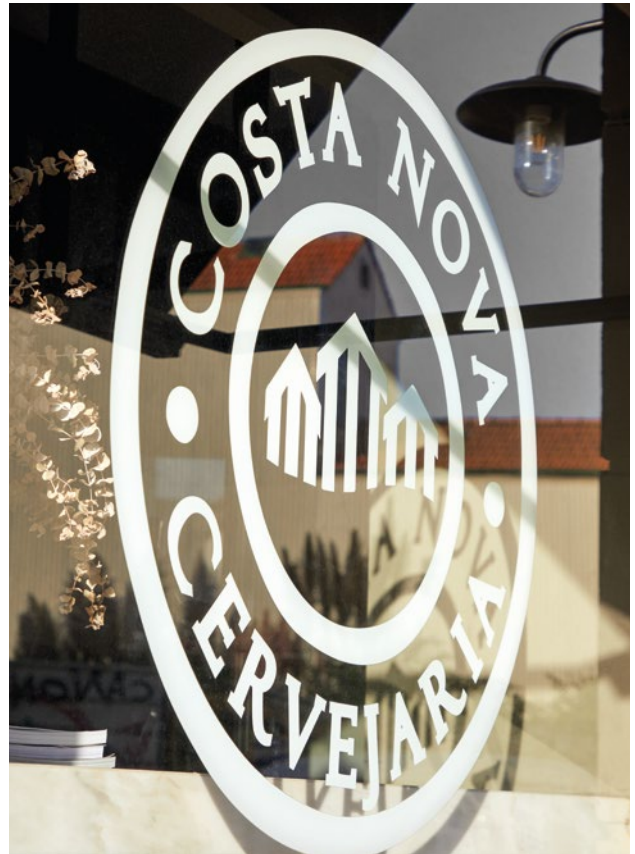




Lunch at *Cervejaria Costa Nova*

Enjoying a relaxed lunch at Cervejaria Costa Nova, the brand's own restaurant, means savoring coastal flavors in a setting shaped by timeless design.





There are places that simply feel like home — **Cervejaria Costa Nova** is one of them. It's where family and friends gather around the table to share flavourful meals, prepared with the same care and comfort as home cooking. The restaurant is a true reflection of the brand's essence: relaxed, welcoming, and thoughtfully designed. Every detail speaks to authenticity — from the tableware and serveware, locally crafted by COSTA NOVA, to the ingredients, sourced from nearby producers. Sustainability is not just a value here — it's part of the experience, woven into every dish and every piece on the table.

Opposite page: Friso tableware in grey and white with **Vine** white wine glass 38 cl | 13 fl oz in clear. **Above:** Friso dinner plate 28 cm | 11" and soup/pasta plate 25 cm | 10" in sage green.

Kitchen in *the City*

Modern kitchens have embraced a new aesthetic. Gleaming, flawless cabinets are giving way to vintage-inspired pieces and cozy, lived-in atmospheres. These are neutral, adaptable spaces that evolve with the rhythm of family life.





On weekends, we escape to the countryside — to a home that feels like ours in every sense.

It's where time slows down, where the rush of professional life fades into the background, and where every room reflects a return to what matters most. The table, always central to this ritual, is set with intention — pieces that connect us to nature and to one another.

Riviera and **Poterie** bring us home — to a kitchen filled with warmth, memory, and the beauty of simple moments.

Opposite page, clockwise: **Poterie** mixing bowls in mocha. **Riviera** dinner plate 27 cm | 11" and salad/dessert plate 22 cm | 9" in azur. **Maria** napkins.

SHOP THE LOOK

Gift guide for the perfect host

Kitchen and tableware pieces that make perfect gifts for the perfect host — timeless essentials that elevate every gathering and celebrate the art of welcoming.



1.



2.



3.



4.



5.



6.



7.



8.



9.



10.



11.



1. Pacifica set 4 mixing bowls in vanilla. **2. Terry Stripes** kitchen towel in white-blueberry. **3. Modern Storage** garlic canister w/ smoked cork lid 14 cm | 5" in white. **4. Cork trivet** w/ leather handle 25 cm | 10" in natural. **5. Tosca** pitcher 150 cl | 51 fl oz in green. **6. Ensemble** gift oval cov. casserole w/ cork tray 193 cl | 65 fl oz in white. **7. Pico** flatware 5 pieces in black. **8. Pacifica** footed plate 28 cm | 11" in chestnut. **9. Beechwood** french rolling pin w/ ceramic edges. **10. Stacked Organic** soup/cereal bowl 15 cm | 6" in port. **11. Stacked Organic** oval baker 30 cm | 12" in salt.



12.



13.



14.



15.



16.



17.



18.



19.



20.

12. Coupole glass dome 25 cm | 10" in clear. **13. Stacked Organic** footed plate 27 cm | 11" in sky. **14. Beechwood** spatula, fork and spoon. **15. Fattoria** paper towel holder 33 cm | 13" in white. **16. Marisa** tumbler 67 cl | 23 fl oz in green. **17. Modern Storage** onion cellar w/ smoked cork lid 28 cm | 11" in white. **18. Carmela** kitchen towel in cream-blue. **19. Stacked Organic** pie dish 27 cm | 11" in cremini. **20. Pacifica** spoon rest 12 cm | 5" in seed grey.





1.



2.



3.



4.



5.



6.



7.



8.



9.



10.



11.



12.

THE SELECTION

Timeless Gifts for the Heart of the Home

1. **Fattoria** spoon rest 23 cm | 9" in white. 2. **Carmela** kitchen towel in caramel. 3. **Modern Storage** salt cellar w/ smoked cork lid 22 cl | 8 fl oz in white. 4. **Fattoria** batter bowl 205 cl | 69 fl oz in white. 5. **Pacifica** salt cellar w/ wood lid 15 cl | 5 fl oz in seed grey. 6. **Fattoria** canister 146 cl | 49 fl oz in white. 7. **Fattoria** rect. butter dish w/ lid 19 cm | 8" in white. 8. **Oak wood** cutting/serving board w/ handle 42 cm | 17". 9. **Fattoria** juice/citrus squeezer 17 cm | 7" in white. 10. **Modern Storage** lid/sponge holder 10 cm | 3" in white. 11. **Pacifica** spoon rest 12 cm | 5" in vanilla. 12. **Carmela** kitchen apron in caramel-cream.

The Winter

60

Winter Tables *A Return to Comfort*

70

Embracing the season's *Warm Colors*

76

Weekends in the *City Loft*

82

Escapes to the *Countryside*

90

The Winter Kitchen: *Warm Edit*

er Chapter

Winter Tables

A Return to Comfort

NEW INTRODUCTION
ARENITO COLLECTION NEW DINNERWARE

Winter draws us inward. We move gently, cook slowly, and welcome others into spaces that feel soft, grounding, and real. With its tactile surfaces and earthy palette, **Arenito** brings a sensory depth to the winter table. This season, the expanded collection invites us to embrace the beauty of the everyday — to gather, to share, and to feel at home.







Family Moments Around the Weekend Table

Each of **Arenito's** six nature-inspired colors tells a story — subtle and grounding. While every shade carries a quiet beauty, some tones feel especially at home in winter.

Charcoal grey adds depth and contrast, like the shadowed hush of a snowy evening. Sage green offers a gentle nod to evergreen calm, while champagne yellow brings a soft glow to the table — a whisper of warmth on cold days.

Whether mixed or styled individually, these tones create a setting that feels serene and inviting, perfect for slow, soulful meals shared in good company.

Opposite page: **Arenito** dinner plate 28 cm | 11" and latte bowl 16 cm | 6" in charcoal grey, salad/dessert plate 22 cm | 9" in olive green, **Livia** serving bowl 26 cm | 10" in champagne yellow, **Mito** flatware in wood, and **Maria** napkin in olive. **Above:** **Arenito** tableware in olive green. **Arenito** mug 44 cl | 15 fl oz in olive green and appetizer plate 13 cm | 5" in charcoal grey.





Arenito latte cup 36 cl | 12 fl oz in olive green.



Above: Arenito latte cup 36 cl | 12 fl oz in olive green. **Opposite page:** Arenito dinner plate 28 cm | 11" in charcoal grey, latte bowl 16 cm | 6" in champagne yellow and charcoal grey, appetizer plate 13 cm | 5" in champagne yellow with **Saga** flatware in black matte, **Gomos** water glass 28 cl | 10 fl oz in smoked brown, and **Maria** napkin in khaki.



Arenito in Olive Green



Dinner plate 28 cm | 11"

2RTP282-OLV

D27.5 H3.2 cm
D10 7/8" H1 1/4"
[6]



Salad/dessert plate 22 cm | 9"

2RTP222-OLV

D21.9 H2.5 cm
D8 5/8" H1"
[6]



Appetizer plate 13 cm | 5"

2RTP131-OLV

D12.5 H1.2 cm
D4 7/8" H1/2"
[6]



Poke bowl 19 cm | 7"

2RTS192-OLV

D18.5 H7 cm | 99 cl
D7 1/4" H2 3/4" | 33 1/2 fl oz
[6]



Latte bowl 16 cm | 6"

2LNS161-OLV

D15.8 H7.7 cm | 67 cl
D6 1/4" H3" | 22 5/8 fl oz
[6]



Mug 44 cl | 15 fl oz

2LNC132-OLV

13.4 x 9.7 H10.5 cm | 44 cl
5 1/4" x 3 7/8" H4 1/8" | 14 7/8 fl oz
[6]



Latte cup 36 cl | 12 fl oz

2GOC101-OLV

D10.5 H7.6 cm | 36.3 cl
D4 1/8" H3" | 12 1/4 fl oz
[6]



Lungo cup 20 cl | 7 fl oz

2LNC092-OLV

D8.7 H6.6 cm | 20 cl
D3 3/8" H2 5/8" | 6 3/4 fl oz
[6]



Espresso cup 7 cl | 2 fl oz

2LNC062-OLV

D6 H4.9 cm | 6.5 cl
D2 3/8" H1 7/8" | 2 1/4 fl oz
[6]

ALSO AVAILABLE IN

Discover Arenito's full range at costanova.com



● Charcoal Grey (CHR)
— Reactive Dark Grey —



● Sage Green (GRN)
— Reactive Green —



● Champagne Yellow (CHM)
— Reactive Yellow —



● Mauve Rose (PNK)
— Reactive Pink —



● Aqua (AQU)
— Reactive Light Green —



Arenito dinner plate 28 cm | 11" in charcoal grey with **Mito** flatware in wood, and **Maria** napkin in olive.





Embracing the season's *Warm Colors*

Setting the tone for colder days with comfort and ease, we present a curated selection to bring warmth to your table styling.





Opposite page: **Pacifica** dinner plate 28 cm | 11" and soup/pasta bowl 22 cm | 9" in cayenne. **Above, clockwise:** **Pacifica** tableware in monterosa. **Pacifica** dinner plate 28 cm | 11" in seed grey, christmas tree appetizer plate 16 cm | 6", and mug 33 cl | 11 fl oz in cayenne. **Friso** soup/pasta bowl 23 cm | 9" in white with **Vine** red wine glass 48 cl | 16 fl oz in clear.





SHOP THE LOOK

Warming up the table

As we revisit **Madeira in grey**, alongside **Pacifica**, **Augusta***, and **Friso** — and highlight the quiet elegance of **Stacked Organic** — we rediscover the beauty of warmer tones, perfect for enriching meals on colder days, perfect for enriching meals on colder days. COSTA NOVA offers a wide variety of pieces and complete collections designed to bring timeless style to the table — in every season.



1. Pacifica christmas tree salad/dessert plate 22 cm | 9". **2. Stacked Organic** oval plate 20 cm | 8" in port. **3. Mito** flatware 5 pieces in black. **4. Alice** red wine glass 48 cl | 17 fl oz and white wine glass 38 cl | 13 fl oz in clear. **5. Stacked Organic** serving bowl 37 cm | 14" in cremini. ***Augusta collection**: exclusively available outside the USA.





Weekends in the *City Loft*

Young hearts are timeless, and weekends in a city loft echo a dreamy lifestyle we embrace at any age.

Modern tableware, crafted in fine stoneware, reflects that same spirit — effortlessly stylish and enduring through seasons and spaces, from quiet mornings to lively dinners.

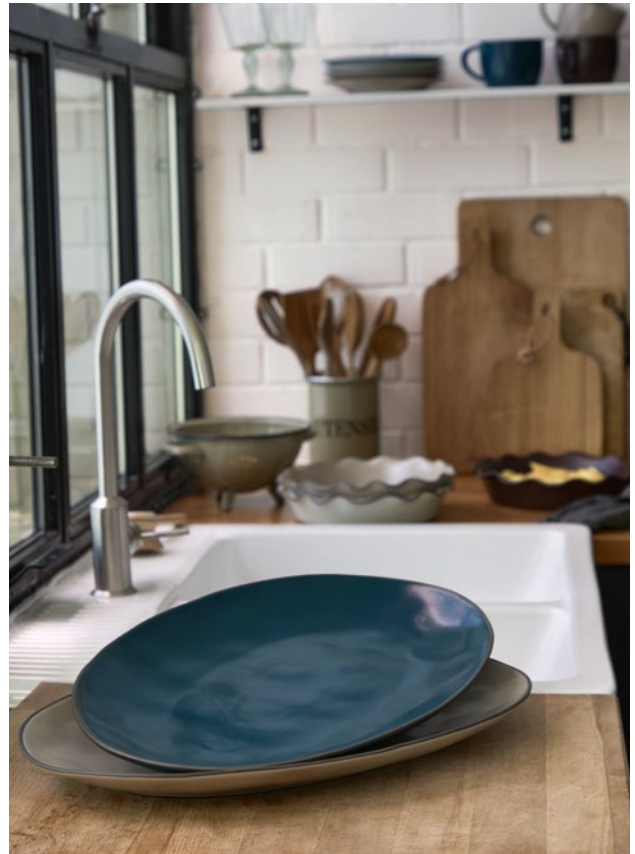


Modern life often steals our time, rushing us from one moment to the next. Yet at the table, time asks to be savored. Setting a beautiful table becomes part of the ritual, inviting us to slow down.

Stacked Organic, crafted from recycled clay, brings a relaxed, natural aesthetic that complements any interior. Embrace (and indulge in) layers upon layers of table linens to complete the wintery look.

Above: Stacked Organic dinner plate 27 cm | 11" in deep sea, oval plate 20 cm | 8" in salt and cremini, soup/cereal bowl 15 cm | 6" in port, and footed plate 27 cm | 11" in cremini. **Opposite page: Augusta** tableware in natural-black (exclusively available outside the USA).





Above, clockwise: Stacked Organic soup/cereal bowl 15 cm | 6" in salt. **Stacked Organic** oval platter 45 cm | 18" in deep sea and cremini. **Stacked Organic** pie dish 27 cm | 11" in all colors.



SHOP THE LOOK

Eco-friendly
materials,
sustainably and
ethically crafted



A thoughtfully curated selection of items that
perfectly align with the modern values of
sustainable living and mindful shopping.

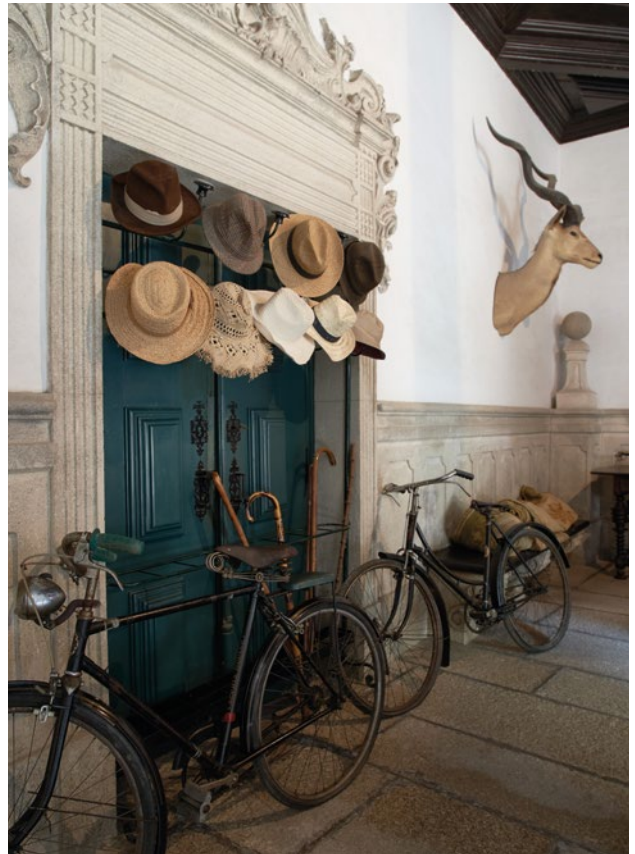
1. Marrakesh fruit bowl 12 cm | 5" in sable blanc. **2. Saga** flatware 5 pieces in matte. **3. Stacked Organic** dinner plate 27 cm | 11" in port. **4. Stacked Organic** soup/pasta bowl 23 cm | 9" in cremi. **5. Stacked Organic** oval plate 20 cm | 8" in deep sea. **6. Stacked Organic** mug 36 cl | 12 fl oz in salt. **7. Acapulco** red wine glass 55 cl | 19 fl oz and tumbler 60 cl | 20 fl oz in green. **8. Wood** square napkin ring in natural. **9. Marrakesh** appetizer plate 13 cm | 5" in sable blanc. **10. Maria** napkin in olive and khaki. **11. Stacked Organic** footed plate 27 cm | 11" in salt.





Escapes to the *Countryside*

We all deserve a family haven — a peaceful refuge or a frequent escape to the countryside — and table settings that speak to nature.



On weekends, we escape to the
countryside — to a home that
feels like ours in every sense.
It's where time slows down, where the
rush of professional life fades into the
background, and where every room
reflects a return to what matters most.
The table, always central to this ritual, is
set with intention — pieces that connect
us to nature and to one another.
Riviera and **Poterie** bring us home — to
a kitchen filled with warmth, memory,
and the beauty of simple moments.

Opposite page, clockwise: **Poterie** mixing bowls in mocha. **Riviera** dinner plate 27 cm | 11" and salad/dessert plate 22 cm | 9" in azur.
Maria napkins.



Above, left to right: Alessa kitchen aprons. **Poterie** dinner plate 26 cm | 10" in cream-caramel and serving bowl 17 cm | 7" in caramel-latte.



Above, left to right: **Poterie** mixing bowls 195 cl | 66 fl oz and 87 cl | 29 fl oz in mocha, and salad/dessert plate 20 cm | 8" in cream-caramel. **Riviera** dinner plate 27 cm | 11" in terra.





SHOP THE LOOK

Embrace the countryside spirit with a simple, curated table

Shop this look by adding our favorite naturally inspired pieces to your table. A simple approach to timeless table settings — where food was laid with ease, and the tableware became part of the story.



1. Poterie dinner plate 26 cm | 10" in mocha. **2. Riviera** alchemille leaf 18 cm | 7" in fôrets. **3. Riviera** hydrangea leaf 22 cm | 9" in vignes. **4. Carmela** kitchen towel in cream. **5. Riviera** strelizia leaf 40 cm | 16" in fôrets. **6. Horn** napkin ring in dark grey. **7. Riva** wine glass 28 cl | 9 fl oz in clear. **8. Riviera** diabolito vase soy wax candle 19 cm | 8".

The Winter Kitchen: *Warm Edit*

In the quiet hush of winter, our countryside kitchen becomes a haven
— a place to escape, gather, stir, simmer, and savor.

This season, we invite you to embrace the comforting rhythm of winter cooking with a curated selection of kitchen essentials — crafted to support every soul-warming recipe and cherished holiday tradition.





National

with Pancake Day—for instance, at Eton and at Westminster School. When Henry VIII founded the College of Westminster, he put the Headmaster and the Usher of the King's Scholars with the boys in the Abbey kitchen, so it was probably here that the pancake was originally tossed. It was customary in those days for the under clerk of the College to start, preceded by the headle and other officers, and to throw a large pancake over the bar dividing the upper and the lower school. At the present day the cook brings in the pancake and tosses it over the bar; the lucky scholar who gets it whole in the largest piece in the general scramble carries it to the Dining room and receives one guinea, the cook receives two guineas, and both are paid from the Abbey funds.

In 1919 the King and Queen were present at Westminster to see the pancake tossed and the scramble of the boys for the largest piece.

BATTER FOR PANCAKES

$\frac{1}{2}$ lb. of flour. 14 pints of milk.
3 eggs. Fitch of salt.

Pass the flour through a sieve into a basin and add a pinch of salt; make a well in the centre and break the egg into it with a little of the milk; mix well and keep adding more milk until all is in. It should be quite smooth and creamy. Then beat well for ten minutes, and it should stand for at least an hour before using. When ready pour into a jug. Put some lard into a small saucepan to get hot, and pour a large teaspoonful into a hot frying pan. Then pour a thin layer of the batter into the pan, and cook it gently until set and brown underneath. Then take up the pan, give it a shake and a sharp toss so as to turn the pancake over, and cook for about half a minute. Turn out on to a paper covered with castor sugar, squeeze some lemon-juice over, and fold up quickly. Proceed in the same manner for the rest of the pancakes.



Stowe Tuesday

SCOTLAND
GIRDLE SCONES

$\frac{1}{2}$ lb. of flour. 4 teaspoonfuls of tartaric acid, or
1 pint of buttermilk. 4 teaspoonfuls of baking powder.
1 teaspoonful of bicarbonate of soda. 2 teaspoonfuls of salt.

Mix the flour, raising mixture, and salt together, and pass it through a sieve into a basin. Mix quickly with the buttermilk. Turn out and knead lightly, and roll out about $\frac{1}{4}$ in. thick. Cut into rounds with a tin cutter. Lightly grease a hot griddle with butter, set the scones on and bake quickly. When well risen and a little browned underneath, turn on the other side for a couple of minutes. If no griddle is at hand, use a thick sheet of iron.

SCOTCH SCONES

1 lb. of flour. 4 pint of cold milk.
1 oz. of castor sugar. 2 teaspoonfuls of baking powder.
3 ozs. of butter.

Take a basin and sieve the pound of flour and add the salt and together, in which rub the butter, and add the 4 pint of cold castor sugar. Mix all with together and knead well. Turn into milk. Turn out on to the board and knead short, and cut each two rounds and place them on a flat baking sheet, and cut each round across and across, so as to form four scones from each



Cinamon is in the air... we are baking at home

Let this season be filled with the aromas of cinnamon, roasting roots, and simmering sauces. Let your kitchen be a place of connection, comfort, and creativity.

The oven hums quietly, casting a soft warmth through the kitchen. A cake turns golden behind the glass, while a stew simmers slowly on the stove, filling the room with the promise of comfort. These are the small, joyful moments that define the season - and our kitchen collections are here to support them all.

From **mixing bowls** that feel good in your hands to **oven-to-table baking dishes** that make serving effortless, every item in our winter kitchen line has been chosen to help you slow down and savor the ritual of home cooking.

Opposite page: **Scotia** serving bowl 34 cm | 14" and canister 145 cl | 49 fl oz in white.





Opposite page: **Alentejo** dinner plate 27 cm | 11" and soup/pasta plate 25 cm | 10" in white. **Above, clockwise:** **Scotia** square baker 24 cm | 10" in white and crystal. **Alentejo** oval platter 32 cm | 13" in white. **Poterie** mixing bowl 195 cl | 66 fl oz in mocha. **Scotia** canister 145 cl | 49 fl oz in white and utensil holder 17 cm | 7" in crystal, and **Poterie** oval platter 46 cm | 18" in mocha.



Baked Apples with Brown Sugar

A recipe that captures the essence of autumn comfort.

INGREDIENTS

4 firm apples
4 tbsp light brown sugar
1 tsp cinnamon
4 small pats of butter
Optional: walnuts, raisins, or a splash of port wine

INSTRUCTIONS

1. Preheat oven to 180°C (350°F).
2. Core the apples, leaving the base intact to hold the filling.
3. Place them in a Scotia baker and fill each center with 1 tbsp of brown sugar, a pinch of cinnamon, and a small pat of butter.
4. Add a bit of water (or port wine) to the bottom of the dish.
5. Bake for 30–40 minutes, or until tender and golden.
6. Serve warm — ideally with a drizzle of cream or a scoop of vanilla ice cream.



Classic Apple Crumble

A comforting dessert with warm spices and a golden, buttery topping.

INGREDIENTS

For the filling: 5–6 medium apples, peeled and sliced; 2 tbsp brown sugar; 1 tsp cinnamon; 1 tsp lemon juice; Pinch of nutmeg. **For the crumble topping:** 1 cup all-purpose flour; 1/2 cup rolled oats; 1/2 cup brown sugar; 1/2 tsp cinnamon; 1/2 cup cold butter, cubed

INSTRUCTIONS

1. Preheat oven to 175°C (350°F).
2. In a Fattoria mixing bowl, toss sliced apples with brown sugar, cinnamon, lemon juice, and nutmeg. Spread evenly into a greased Stacked Organic pie dish.
3. In a Poterie bowl, combine flour, oats, brown sugar, and cinnamon. Cut in the cold butter until the mixture resembles coarse crumbs.
4. Sprinkle the crumble mixture over the apples.
5. Bake for 35–40 minutes, or until the topping is golden and the apples are bubbly and soft.
6. Serve warm with a scoop of vanilla ice cream or a dollop of whipped cream.



Banana & Chocolate Bread

An autumn delight made for slow mornings and cozy afternoons.

INGREDIENTS

3 ripe bananas
2 eggs
100g brown sugar
80ml oil or melted butter
180g flour
1 tsp baking soda
100g chocolate chunks

INSTRUCTIONS

1. Preheat oven to 180°C (350°F).
2. Mash bananas and mix with eggs, sugar, and oil.
3. Add flour and baking soda, then fold in chocolate.
4. Pour into a Scotia or Fattoria loaf pan and bake for 45–50 minutes.



Caramelized Pears

with *Farófias**

A fresh take on tradition, with the warm, comforting taste of home.

INGREDIENTS

2–3 pears
3 tbsp sugar
1 tbsp butter
2 egg whites
2 tbsp sugar (for the meringue)
Milk (for poaching)
Cinnamon to taste

INSTRUCTIONS

1. Peel the pears and boil them until tender.
2. In a pan, cook the sugar and butter until it forms a golden caramel.
3. Whip the egg whites with the sugar until stiff peaks form.
4. Poach spoonfuls of the farófias in hot milk for 1–2 minutes.
5. Serve the pears with the farófias, and drizzle with the caramel.
6. Sprinkle with cinnamon to taste.

**Farófias* is a traditional Portuguese dessert made from whipped egg whites that are poached in milk.

SHOP THE LOOK

Essentials for Comfort Cooking

We've gathered a thoughtful selection of winter kitchen essentials — perfect for the generous host, the weekend baker, and everyone who finds joy in cooking.



1.



3.



4.



2.



7.



5.



6.



9.



8.

1. **Poterie** mixing bowl 87 cl | 29 fl oz in mocha. 2. **Alentejo** oval platter 32 cm | 13" in white. 3. **Carmela** kitchen apron in caramel. 4. **Poterie** pitcher 158 cl | 53 fl oz in mocha. 5. Set 4 Maple **Steak Knives**. 6. **Poterie** utensil holder 17 cm | 7" in caramel-latte. 7. **Oak wood** round cutting/serving board w/ handle 43 cm | 17". 8. **Impressions** cov. rect. casserole 185 cl | 63 fl oz in white. 9. **Madeira Harvest** oval gratin 25 cm | 10" in vanilla crème.



10. **Fattoria** pitcher 538 cl | 182 fl oz in white. 11. **Fattoria** colander 24 cm | 10" in white. 12. **Fattoria** set 3 measuring cups in white. 13. **Sardegna** oval platter 46 cm | 18" in white-cagliari blue. 14. **Poterie** cruet 33 cl | 11 fl oz in mocha. 15. **Sardegna** appetizer plate 16 cm | 6" in white-cagliari blue. 16. **Scotia** salt/pig cellar 14 cm | 5" in white. 17. **Poterie** lungo cup 19 cl | 7 fl oz in caramel-latte. 18. **Poterie** ramekin 10 cm | 4" in mocha. 19. **Carmela** kitchen towel in amber-brown. 20. **Sardegna** square baker 26 cm | 11" in white. 21. **Beja** oval platter 30 cm | 12" in white & cream. 22. **Alentejo** candle holder 4 cm | 5" in white. 23. **Gomos** water glass 28 cl | 10 fl oz in smoked brown and blush.



1.



2.



3.



4.



5.



6.



7.



8.



9.



10.



11.



12.

THE SELECTION

Bakers for all the big reunions at home

1. Marrakesh cov. casserole 15 cm | 6" in sable blanc. **2. Sardegna** rect. baker 40 cm | 16" in white. **3. Aparte** rect. baker 26 cm | 10" in white. **4. Ensemble** gift rect. baker w/ cork tray 39 cm | 15" in white. **5. Friso** rect. baker 35 cm | 14" in white. **6. Poterie** round gratin 14 cm | 6" in caramel. **7. Pacifica** rect. baker 49 cm | 19" in vanilla. **8. Luzia** oct. baker 22 cm | 9" in cloud white. **9. Stacked Organic** oval baker 25 cm | 10" in salt. **10. Ensemble** gift rect. cov. casserole w/ cork tray 87 cl | 29 fl oz in white. **11. Fontana** oval baker 34 cm | 13" in white. **12. Pacifica** square baker 31 cm | 12" in seed grey.



1.



2.



3.



4.



5.



6.



7.



8.



9.



10.



11.



12.

1. Impressions oval baker 26 cm | 10" in white. **2. Madeira Harvest** square ramekin 9 cm | 4" in vanilla crème. **3. Fattoria** square baker 27 cm | 11" in white. **4. Aparte** oval baker 30 cm | 12" in white. **5. Pacifica** rect. baker 41 cm | 16" in artichoke. **6. Scotia** rect. baker 26 cm | 10" in white. **7. Scotia** square baker 24 cm | 10" in crystal. **8. Impressions** pie dish 30 cm | 12" in white. **9. Sardegna** oval baker 32 cm | 13" in white. **10. Stacked Organic** pie dish 27 cm | 11" and bird 9 cm | 4" in cremini. **11. Poterie** square baker 23 cm | 9" in caramel. **12. Fontana** square baker 27 cm | 11" in white.

Season *T*

104
The Spirit of *Gratitude*

118
The Magic of *Christmas' Eve*

130
The *Apéro hour*

134
Christmas morning *The Anticipation*

144
The Promise of *Midnight*

156
The First Day of a *New Year*

To Gather





The Spirit of *Gratitude*

NEW INTRODUCTION
SILVINA COLLECTION IN TERRACOTTA

As the holiday season arrives, it's time to set the table for festive gatherings. Whether gathered at home or in our family retreat, gratitude fills the air, weaving us closer with every shared memory.





Better Together: warmth, gratitude, and the spirit of family

Let us help you make this year's feast unforgettable with our enchanting new additions: **Silvina** — a tribute to our Portuguese grandmother's warm, welcoming gatherings — and **Pacifica**, now enriched with the earthy embrace of terracotta. Inspired by the 16th-century naturalistic patterns of Bernard Palissy, **Silvina** is a versatile collection, perfect as both serveware and dinnerware.

Together, these collections create a seasonal tablescape filled with rich tones and an inviting atmosphere.

Opposite page: **Pacifica** dinner plate 27 cm | 11" in terracotta, **Silvina** salad/dessert plate 23 cm | 9" in terracotta with **Prado** flatware in vintage gold. **Above, left to right:** **Silvina** tableware in fennel white. **Fontana** oval/turkey platter 57 cm | 22" and sauce/gravy boat 29 cl | 10 fl oz in white.









Opposite page: **Pacifica** dinner plate 27 cm | 11" in terracotta paired with **Silvina** salad/dessert plate 23 cm | 9" and bowl 17 cm | 7" in fennel white, **Prado** flatware in vintage gold, **Gomos** water glass 28 cl | 10 fl oz in blush, **Sensa** red wine glass 40 cl | 14 fl oz in smoked grey, and **Maria** napkin in dusk grey. **Above, left to right:** **Pacifica** serving bowl 32 cm | 13" in terracotta. **Silvina** salad/dessert plate 23 cm | 9" in terracotta.



Above, clockwise: **Silvina** casserole 184 cl | 62 fl oz in terracotta. **Margarida** wine glass 34 cl | 12 fl oz and tumbler 38 cl | 13 fl oz in green, and **Sensa** red wine glass 40 cl | 14 fl oz in smoked grey. **Silvina** centerpiece 27 cm | 11" in fennel white with **Prado** serving spoon and salad fork in vintage brushed, and **Maria** napkin in amber. **Opposite page:** **Pacifica** dinner plate 27 cm | 11" in terracotta, **Silvina** salad/dessert plate 23 cm | 9" and bowl 17 cm | 7" in terracotta, and **Prado** flatware in vintage gold.









Silvina in Fennel White & Terracotta



Serving plate 32 cm | 13"

QLP321-FWH

D32.4 H3.2 cm
D12 3/4" H1 1/4"
[2]



Salad/dessert plate 23 cm | 9"

QLP231-FWH

22.7 x 20.5 H2.1 cm
8 7/8" x 8 1/8" H7/8"
[6]



Appetizer plate 13 cm | 5"

QLP131-FWH

12.6 x 11.4 H2 cm
5" x 4 1/2" H3/4"
[6]



Bowl 17 cm | 7"

QLS171-FWH

17 x 14.4 H6.5 cm | 44.5 cl
6 3/4" x 5 5/8" H2 1/2" | 15 fl oz
[6]



Pasta/serving bowl 34 cm | 13"

QLP341-FWH

D34 H7.2 cm | 290 cl
D13 3/8" H2 7/8" | 98 fl oz
[1]



Serving bowl 28 cm | 11"

QLS281-FWH

27.9 x 26.2 H9.6 cm | 452 cl
11" x 10 3/8" H3 3/4" | 152 7/8 fl oz
[1]



Centerpiece 27 cm | 11"

QLD271-FWH

27 x 25.8 H8.2 cm | 43 cl
10 5/8" x 10 1/8" H3 1/4" | 14 1/2 fl oz
[1]



Salad/dessert plate 23 cm | 9"

QLP231-TRC

22.7 x 20.5 H2.1 cm
8 7/8" x 8 1/8" H7/8"
[6]



Appetizer plate 13 cm | 5"

QLP131-TRC

12.6 x 11.4 H2 cm
5" x 4 1/2" H3/4"
[6]



Bowl 17 cm | 7"

QLS171-TRC

17 x 14.4 H6.5 cm | 44.5 cl
6 3/4" x 5 5/8" H2 1/2" | 15 fl oz
[6]



Casserole 184 cl | 62 fl oz

DH221-TRC

22.2 x 21.4 H14.8 cm | 184.1 cl
8 3/4" x 8 3/8" H5 7/8" | 62 1/4 fl oz
[1]



The Magic *of Christmas' Eve*

NEW INTRODUCTION
SILVINA COLLECTION IN WHITE

This Christmas, we honor our roots with the introduction of **Silvina** — a collection named after our founder's grandmother. The season calls us to set tables with heart and intention, inspired by cherished holiday traditions and the designs of 16th-century ceramicist Bernard Palissy, brought to life through the timeless artistry of Portuguese ceramic craftsmanship. Each piece is a tribute to the past, and every table becomes a story lovingly told.





Opposite page: **Cristal** dinner plate 28 cm | 11" in white, **Silvina** salad/dessert plate 23 cm | 9" in fennel white, **Saga** flatware in matte, and **Acapulco** red wine glass 55 cl | 19 fl oz in green. **Above:** **Silvina** tableware in fennel white with **Saga** flatware in matte, **Acapulco** red wine glass 55 cl | 19 fl oz and tumbler 60 cl | 20 fl oz in green, and **Maria** napkin in khaki.



Above, left to right: **Silvina** tableware in fennel white. **Cristal** dinner plate 28 cm | 11" in white, **Silvina** salad/dessert plate 23 cm | 9" in fennel white, **Saga** flatware in matte, and **Acapulco** red wine glass 55 cl | 19 fl oz in green.



Above, left to right: **Silvina** tableware in fennel white with **Fontana** sauce/gravy boat 29 cl | 10 fl oz and **Marrakesh** 2 salad plates holder in gold. **Cristal** dinner plate 28 cm | 11" in white, **Silvina** salad/dessert plate 23 cm | 9" and bowl 17 cm | 7" in fennel white.





Opposite page: **Cristal** dinner plate 28 cm | 11" in white, **Silvina** salad/dessert plate 23 cm | 9" and bowl 17 cm | 7" in fennel white with **Saga** flatware in matte. **Above:** **Silvina** serving plate 32 cm | 13", salad/dessert plate 23 cm | 9" and centerpiece 27 cm | 11" in fennel white, **Marrakesh** 2 salad plates holder in gold, and **Acapulco** red wine glass 55 cl | 19 fl oz in green.





As we return to the quiet charm of our family retreat, far from the rush and noise, we embrace the slow spirit of the season, savoring time, tradition, and the stories that still live in every shared moment.

Opposite page: **Silvina** tableware in fennel white with **Saga** flatware in matte, and **Acapulco** red wine glass 55 cl | 19 fl oz and tumbler 60 cl | 20 fl oz in green. **Above:** **Silvina** pasta/serving bowl 34 cm | 13", serving bowl 28 cm | 11", centerpiece 27 cm | 11" and appetizer plate 13 cm | 5" in fennel white.



SHOP THE LOOK

The Joy of Welcoming

As we set the table, we seek not perfection, but a perfect moment. A table is meant to be lived and celebrated.



1. Fontana sauce/gravy boat 29 cl | 10 fl oz in white. **2. Silvina** serving plate 32 cm | 13" in fennel white. **3. Cristal** dinner plate 28 cm | 11" in white. **4. Pearl** soup/pasta plate 24 cm | 10" in cream. **5. Maria** napkin in khaki. **6. Horn** napkin ring in camel. **7. Beja** pitcher 219 cl | 74 fl oz in white & cream. **8. Silvina** appetizer plate 13 cm | 5" in fennel white. **9. Acapulco** red wine glass 55 cl | 19 fl oz and tumbler 60 cl | 20 fl oz in green. **10. Saga** flatware 5 pieces in black matte. **11. Silvina** pasta/serving bowl 34 cm | 13" in fennel white.





The *Apéro hour*

For those who cherish togetherness, appetizers are more than food — they're a celebration of sharing.





SHOP THE LOOK

Aperitivo with friends

As the moment suggests, appetizer time is meant to be shared. And when the food takes center stage, how we serve it becomes just as important. Discover COSTA NOVA's curated selection of pieces designed for gatherings just like these — from wine, to cheese or *petiscos* (the Portuguese word for appetizers), each item offers the perfect canvas for connection.

1. Baga decanter 180 cl | 61 fl oz in clear. **2. Tinta** decanter 160 cl | 54 fl oz in clear. **3. The Nutcracker** 3 plate holder in metallic brown. **4. Sensa** flute 22 cl | 8 fl oz and tumbler 30 cl | 10 fl oz in clear. **5. Oak Wood** round cutting/serving board w/ handle 40 cm | 16". **6. Silvina** centerpiece 27 cm | 11" in fennel white. **7. Coupole** glass dome 25 cm | 10" in clear. **8. Set 3 cheese knives**. **9. Wood** round spiral napkin ring in dark wood. **10. Silvina** bowl 17 cm | 7" in fennel white. **11. Aparte** party bucket 32 cm | 13" in white. **12. Vine** white wine glass 38 cl | 13 fl oz and tumbler 33 cl | 11 fl oz in clear.





Christmas morning

The Anticipation

While the house still sleeps, a mother gently wakes and sets the table — each piece placed with love, ready to hold the warmth of a day wrapped in joy, quiet magic, and the closeness of family.





Laid-back elegance with modern minimalism

Pacifica's laid-back elegance gently balances modern minimalism with traditional farmhouse warmth, making it a perfect choice for countless moments, including intimate Christmas lunches with close family.

This season, the **Christmas Tree** edition welcomes new additions, bringing a festive, wintery touch to the table — perfect for mixing and matching with Pacifica's signature colors or your existing tableware.

As we set the scene, we sprinkle the décor with touches of

The Nutcracker — a collection that brings the magic of Tchaikovsky's ballet to the holiday table.

Opposite page: **Pacifica** tableware in vanilla, christmas tree and artichoke with **Vela** flatware in brushed, **Margarida** wine glass 34 cl | 12 fl oz in green, **Maria** tablecloth and napkin in mint. **Above, left to right:** **Pacifica** christmas tree footed plate 27 cm | 11". **The Nutcracker** oval platter 50 cm | 20" in white.





Opposite page: **Pacifica** dinner plate 27 cm | 11" in artichoke and christmas tree salad/dessert plate 22 cm | 9" with **Vela** flatware in brushed, and **Gomos** water glass 28 cl | 10 fl oz in blush. **Above:** **The Nutcracker** soup/pasta bowl 23 cm | 9" and soup/cereal bowl 16 cm | 6" in white.



Above, left to right: **Pacifica** dinner plate 27 cm | 11" in vanilla and christmas tree salad/dessert plate 22 cm | 9".
The Nutcracker canister 277 cl | 94 fl oz in white.



Above, left to right: **Pacifica** dinner plate 27 cm | 11" in terracotta and christmas tree appetizer plate 16 cm | 6" with **Vela** flatware in brushed, and **Gomos** water glass 28 cl | 10 fl oz in blush. **Pacifica** christmas tree oval platter 41 cm | 16".

Pacifica Christmas Tree



Set 4 salad/dessert plate

22 cm | 9"

SOPS04-CHT

D22.4 H2.5 cm

D8 7/8" H1"

[1]



Set 4 appetizer plate

16 cm | 6"

SOPS19-CHT

D16 H2.2 cm

D6 1/4" H7/8"

[1]



Oval platter 41 cm | 16"

SOA411-CHT

40.8 x 26.3 H4.5 cm

16 1/8" x 10 3/8" H1 3/4"

[1]



Footed plate 27 cm | 11"

SOP272-CHT

D27.3 H8.6 cm

D10 3/4" H3 3/8"

[1]

Meet Pacifica new color Terracotta on page 45. Discover Pacifica's full range at costanova.com





The Promise of *Midnight*

NEW INTRODUCTION
RESONANCE COLLECTION IN WHITE-GOLD

On this special evening, every detail sparkles with intention. As we gather to welcome what's to come, the table is set with delicate porcelain, luminous accents, refined linens, and the quiet joy of *savoir-faire*. The ambiance finds a graceful harmony between elegance, emotion, and celebration.





The sparkle of glassware, the glimmer of candlelight, and the quiet hush before the countdown... All eyes are drawn to the delicate details of a beautifully set table, made to be shared with those we hold dear.

Resonance — COSTA NOVA's first fine porcelain collection — strikes the perfect balance between modernity and tradition. Paired with **Sensa** glassware and **Prado** flatware in gold, the scene is set for a celebration to remember.

Opposite page: **Resonance** tableware in white-gold with **Prado** flatware in vintage gold, **Sensa** glasses in clear, and **Maria** napkin in chalk white. **Above, left to right:** **Resonance** dinner plate 27 cm | 11" and soup/pasta bowl 21 cm | 8" in white-gold, **Prado** flatware in vintage gold, and **Sensa** red wine glass 40 cl | 14 fl oz and white wine glass 25 cl | 9 fl oz in clear. **Aparte** party bucket 32 cm | 13" in white, **Resonance** coffee cup 8 cl | 3 fl oz and coffee saucer 13 cm | 5" in white-gold, and **Sensa** flute 22 cl | 8 fl oz in clear.





Opposite page: **Resonance** dinner plate 27 cm | 11" and salad/ dessert plate 23 cm | 9" in white-gold, **Prado** flatware in vintage gold, and **Sensa** red wine glass 40 cl | 14 fl oz and white wine glass 25 cl | 9 fl oz in clear. **Top to bottom:** **Resonance** dinner plate 27 cm | 11" and salad/dessert plate 23 cm | 9" in white-gold, **Botânica** hornbeam leaf 18 cm | 7" in or, and **Prado** flatware in vintage gold. **Resonance** tableware in white-gold with **Prado** flatware in vintage gold, **Sensa** glasses in clear, and **Maria** napkin in chalk white.



Above, left to right: **Resonance** tableware in white-gold with **Prado** flatware in vintage gold, **Sensa** glasses in clear, and **Maria** napkin in chalk white. **Resonance** dinner plate 27 cm | 11" and salad/dessert plate 23 cm | 9" in white-gold, **Botânica** oak leaf 17 cm | 7" in or, and **Sensa** red wine glass 40 cl | 14 fl oz and white wine glass 25 cl | 9 fl oz in clear. **Opposite page:** **Resonance** footed plate 27 cm | 11" in white-gold.







Opposite page: **Resonance** footed plate 27 cm | 11", mug 41 cl | 14 fl oz, coffee cup 8 cl | 3 fl oz and coffee saucer 13 cm | 5" in white-gold. **Above:** **Resonance** coffee cup 8 cl | 3 fl oz and coffee saucer 13 cm | 5" in white-gold with **Prado** coffee spoon in vintage gold.





SHOP THE LOOK

Graced with Gold

A fine golden line between elegance and warmth — this selection brings a radiant glow to the table, making every setting shine in its own unique way.

1. Carolina napkin in white-caramel. **2. Sensa** red wine glass 40 cl | 14 fl oz and white wine glass 25 cl | 9 fl oz in clear w/ golden rim. **3. Botânica** hornbeam leaf 18 cm | 7" in or. **4. Botânica** oak leaf 17 cm | 7" in or. **5. Grespresso** espresso cup 7 cl | 2 fl oz in white. **6. Resonance** salad/dessert plate 23 cm | 9" in white-gold. **7. Prado** flatware 5 pieces in vintage gold. **8. Horn** napkin ring in dark grey. **9. Resonance** footed plate 27 cm | 11" in white-gold. **10. Sensa** tumbler 30 cl | 10 fl oz and flute 22 cl | 8 fl oz in clear w/ golden rim. **11. Resonance** soup/cereal bowl 15 cm | 6" in white-gold. **12. Fontana** pitcher 243 cl | 82 fl oz in white. **13. Resonance** mug 41 cl | 14 fl oz in white-gold.



The First Day of a *New Year*

NEW INTRODUCTION
RESONANCE COLLECTION IN WHITE

Our kind neighbor gifted us the most beautiful white roses. Whether at breakfast or lunch, their quiet elegance brings a touch of sophistication — and a gentle reminder of the beauty in closeness. As we lay our mother's favorite tablecloth and set the scene with the modern grace of **Resonance**, we think of those we hold dear — some by our side, others felt in spirit, always part of the moment. Here's to meaningful gatherings and the promise of a bright year ahead.



Resonance in White



Dinner plate 27 cm | 11"

8RCP271-WHI

D27.2 H1.8 cm

D10 3/4" H3/4"

[12]



Salad/dessert plate 23 cm | 9"

8RCP231-WHI

D23 H1.5 cm

D9" H5/8"

[12]



Appetizer plate 17 cm | 7"

8RCP172-WHI

D16.9 H1.6 cm

D6 5/8" H5/8"

[12]



Soup/pasta bowl 21 cm | 8"

8RCP211-WHI

D21 H4.4 cm | 84.6 cl

D8 1/4" H1 3/4" | 28 1/4 fl oz

[12]



Soup/cereal bowl 15 cm | 6"

8RCS151-WHI

D15 H5.6 cm | 47 cl

D5 7/8" H2 1/4" | 15 7/8 fl oz

[12]



Mug 41 cl | 14 fl oz

8RCC131-WHI

12.9 x 9.6 H9.1 cm | 41 cl

5 1/8" x 3 3/4" H3 5/8" | 13 7/8 fl oz

[12]



Tea cup 26 cl | 9 fl oz

8RCC141-WHI

13.5 x 10.5 H6 cm | 26 cl

5 3/8" x 4 1/8" H2 3/8" | 8 3/4 fl oz

[12]



Tea saucer 17 cm | 7"

8RCP171-WHI

D16.9 H1.6 cm

D6 5/8" H5/8"

[12]



Coffee cup 8 cl | 3 fl oz

8RCC081-WHI

8.4 x 6.6 H6 cm | 8 cl

3 1/4" x 2 5/8" H2 3/8" | 2 3/4 fl oz

[12]



Coffee saucer 13 cm | 5"

8RCP131-WHI

D13 H1.3 cm

D5 1/8" H1/2"

[12]



Footed plate 27 cm | 11"

8RCP272-WHI

D27.2 H10.4 cm

D10 3/4" H4 1/8"

[1]

Resonance in White-Gold



Dinner plate 27 cm | 11"

8RCP271-WGD

D27.2 H1.8 cm

D10 3/4" H3/4"

[12]



Salad/dessert plate 23 cm | 9"

8RCP231-WGD

D23 H1.5 cm

D9" H5/8"

[12]



Soup/pasta bowl 21 cm | 8"

8RCP211-WGD

D21 H4.4 cm | 84.6 cl

D8 1/4" H1 3/4" | 28 1/4 fl oz

[12]



Soup/cereal bowl 15 cm | 6"

8RCS151-WGD

D15 H5.6 cm | 47 cl

D5 7/8" H2 1/4" | 15 7/8 fl oz

[12]



Mug 41 cl | 14 fl oz

8RCC131-WGD

12.9 x 9.6 H9.1 cm | 41 cl

5 1/8" x 3 3/4" H3 5/8" | 13 7/8 fl oz

[12]



Coffee cup 8 cl | 3 fl oz

8RCC081-WGD

8.4 x 6.6 H6 cm | 8 cl

3 1/4" x 2 5/8" H2 3/8" | 2 3/4 fl oz

[12]



Coffee saucer 13 cm | 5"

8RCP131-WGD

D13 H1.3 cm

D5 1/8" H1/2"

[12]



Footed plate 27 cm | 11"

8RCP272-WGD

D27.2 H10.4 cm

D10 3/4" H4 1/8"

[1]

Also new for 2025



Botânica
Hornbeam leaf 18 cm | 7"
QLP181-OR

18.3 x 16.6 H1.9 cm
7 1/4" x 6 1/2" H3/4"
[6]



Botânica
Oak leaf 17 cm | 7"
QLP171-OR

17.1 x 17.3 H2.2 cm
6 3/4" x 6 3/4" H7/8"
[6]



Lisa
Charger plate/platter 33 cm | 13"
 LSP331-WHE

D32.7 H3.4 cm
 D12 7/8" H1 3/8"
 [6]



Lisa
Dinner plate 27 cm | 11"
 LSP273-WHE

D26.7 H3.8 cm
 D10 1/2" H1 1/2"
 [6]



Lisa
Soup/pasta plate 26 cm | 10"
 LSP251-WHE

D25.5 H4.6 cm | 78.5 cl
 D10" H1 3/4" | 26 1/2 fl oz
 [6]



Lisa
Salad/dessert plate 24 cm | 9"
 LSP242-WHE

D23.8 H3.5 cm
 D9 3/8" H1 3/8"
 [6]



Lisa
Salad/dessert plate 21 cm | 8"
 LSP216-WHE

D21.1 H3.1 cm
 D8 1/4" H1 1/4"
 [6]



Lisa
Appetizer plate 16 cm | 6"
 LSP161-WHE

D16.3 H2.4 cm
 D6 3/8" H1"
 [6]



Lisa
Soup/cereal bowl 16 cm | 6"
 LSS151-WHE

D15.8 H8.1 cm | 52.1 cl
 D6 1/4" H3 1/4" | 17 5/8 fl oz
 [6]



Lisa
Square bowl 11 cm | 4"
 LSN121-WHE

11.2 x 11.2 H6.1 cm | 33 cl
 4 3/8" x 4 3/8" H2 3/8" | 11 1/8 fl oz
 [6]



Lisa
Mug 36 cl | 12 fl oz
 LSC121-WHE

12.4 x 9 H11.5 cm | 36 cl
 4 7/8" x 3 1/2" H4 1/2" | 12 1/8 fl oz
 [6]



Lisa
Tea cup and saucer 19 cl | 7 fl oz
 LSCS01-WHE

D15.8 H8 cm | 19.1 cl
 D6 1/4" H3 1/4" | 6 1/2 fl oz
 [6]



Lisa
Coffee cup and saucer 7 cl | 2 fl oz
 LSCS02-WHE

D12.3 H6.3 cm | 7 cl
 D4 7/8" H2 1/2" | 2 3/8 fl oz
 [6]



Lisa
Serving bowl 26 cm | 10"
 LSS261-WHE

D26 H12.6 cm | 281.8 cl
 D10 1/4" H5" | 95 1/4 fl oz
 [1]



Lisa
Pitcher 193 cl | 65 fl oz
 LSZ241-WHE

23 x 13.8 H24.3 cm | 193 cl
 9" x 5 3/8" H9 5/8" | 65 1/4 fl oz
 [1]

Lisa collection: Exclusively available outside the USA. WHE - White



Marrakesh
Soup/pasta bowl 21 cm | 8"

● 2KEP212-CAN
● 2KEP212-CIE

D21.2 H5.5 cm | 79 cl
D8 3/8" H2 1/8" | 26 3/4 fl oz
[6]



Marrakesh
Appetizer plate 13 cm | 5"

● 2KEP131-CAN ● 2KEP131-CMN
● 2KEP131-CIE ● 2KEP131-EUC
○ 2KEP131-SBL

D12.5 H2.7 cm
D4 7/8" H1 1/8"
[6]



Marrakesh
3 horizontal appetizer
plate holder
O30630-GLD

41 x 12 H14 cm
16 1/8" x 4 3/4" H5 1/2"
[4]

COLLECTION	PAGE	ITEM	REFERENCE	COLOR	DIMENSIONS	PACK
ALENTEJO	23	Coffee cup and saucer 9 cl 3 fl oz	TCS02-WHT	White	D14.5 H6.2 cm 9 cl D5 3/4" H2 1/2" 3 fl oz	6
	98	Oval platter 32 cm 13"	JA321-WHT	White	32.3 x 22.2 H3.1 cm 12 3/4" x 8 3/4" H1 1/4"	1
	99	Candle holder 4 cm 2"	TD121-WHI	White	D11.8 H4 cm D4 5/8" H1 5/8"	2
APARTE	100	Rect. baker 26 cm 10"	LSR251-WHE	White	25.7 x 18.6 H6.8 cm 167.5 cl 10 1/8" x 7 3/8" H2 5/8" 56 5/8 fl oz	1
	101	Oval baker 30 cm 12"	LSA301-WHE	White	30.4 x 22.3 H7.5 cm 240 cl 12" x 8 3/4" H3" 81 1/8 fl oz	1
	133	Party bucket 32 cm 13"	LSD321-WHI	White	32.2 x 24.4 H21.1 cm 698 cl 12 3/4" x 9 5/8" H8 1/4" 236 fl oz	1
ARENITO	15	Salad/dessert plate 22 cm 9"	2RTP222-GRN	Sage Green	D21.9 H2.5 cm D8 5/8" H1"	6
	15	Latte cup 36 cl 12 fl oz	2GOC101-GRN	Sage Green	D10.5 H7.6 cm 36.3 cl D4 1/8" H3" 12 1/4 fl oz	6
	24	Espresso cup 7 cl 2 fl oz	2LNC062-CHR	Charcoal Grey	D6 H4.9 cm 6.5 cl D2 3/8" H1 7/8" 2 1/4 fl oz	6
BEJA	35	Mug 36 cl 12 fl oz	ATC132-RED	White & Red	13.1 x 9.3 H10.2 cm 35.5 cl 5 1/8" x 3 5/8" H4" 12 fl oz	6
	23	Coffee cup and saucer 8 cl 3 fl oz	ATCS02-RED	White & Red	D12.5 H6.4 cm 8 cl D4 7/8" H2 1/2" 2 3/4 fl oz	6
	99	Oval platter 30 cm 12"	ATA301-CRM	White & Cream	30 x 21.6 H3.3 cm 11 3/4" x 8 1/2" H1 1/4"	1
	129	Pitcher 219 cl 74 fl oz	ATZ211-CRM	White & Cream	22.4 x 16.7 H19.9 cm 218.5 cl 8 7/8" x 6 5/8" H7 7/8" 73 7/8 fl oz	1
CRISTAL	129	Dinner plate 28 cm 11"	STP281-WHI	White	D27.7 H2.1 cm D10 7/8" H7/8"	6
ENSEMBLE	100	Gift rect. baker w/ cork tray 39 cm 15"	DR391-WHI	White	38.5 x 24.5 H8.6 cm 342.8 cl 15 1/8" x 9 5/8" H3 3/8" 115 7/8 fl oz	1
	54	Gift oval cov. casserole w/ cork tray 193 cl 65 fl oz	DH301-WHI	White	30.1 x 20.7 H15.7 cm 192.6 cl 11 7/8" x 8 1/8" H6 1/8" 65 1/8 fl oz	1
	100	Gift rect. cov. casserole w/ cork tray 87 cl 29 fl oz	DH242-WHI	White	24.4 x 14.3 H12.1 cm 86.5 cl 9 5/8" x 5 5/8" H4 3/4" 29 1/4 fl oz	1
FATTORIA	57	Batter bowl 205 cl 69 fl oz	FA545-WHI	White	26.3 x 18.6 H13 cm 205 cl 10 3/8" x 7 3/8" H5 1/8" 69 3/8 fl oz	1
	101	Square baker 27 cm 11"	FA525-WHI	White	26.7 x 23.9 H7.3 cm 220.6 cl 10 1/2" x 9 3/8" H2 7/8" 74 5/8 fl oz	1
	99	Colander 24 cm 10"	FA562-WHI	White	D23.8 H8.1 cm 172 cl D9 3/8" H3 1/4" 58 1/8 fl oz	1
	99	Set 3 measuring cups	FA550/1/2-WHI	White	240 ml. 120 ml. 80 ml. 1 cup. 1/2 cup. 1/3 cup.	1
	57	Rect. butter dish 19 cm 8" w/ lid	FA568-WHI	White	18.8 x 10.7 H7.7 cm 7 3/8" x 4 1/4" H3"	1
	57	Juice/citrus squeezer 17 cm 7"	FA564-WHI	White	17.4 x 13.1 H8.5 cm 15 cl 6 7/8" x 5 1/8" H3 3/8" 5 1/8 fl oz	1
	99	Pitcher 538 cl 182 fl oz	FA530-WHI	White	27.1 x 21.5 H26.3 cm 537.6 cl 10 5/8" x 8 1/2" H10 3/8" 181 3/4 fl oz	1

COLLECTION	PAGE	ITEM	REFERENCE	COLOR	DIMENSIONS	PACK
FATTORIA	57	Spoon rest 23 cm 9"	FA540-WHI	White	23.1 x 11.5 H2.1 cm 9 1/8" x 4 1/2" H7/8"	2
	55	Paper towel holder 33 cm 13"	FA566-WHI	White	D18 H32.7 cm D7 1/8" H12 7/8"	1
	57	Canister 146 cl 49 fl oz	FA555-WHI	White	D15.1 H17.2 cm 145.5 cl D6" H6 3/4" 49 1/4 fl oz	1
FONTANA	35	Mug 40 cl 14 fl oz	FT311-WHI	White	13.8 x 10.2 H9.9 cm 40.3 cl 5 3/8" x 4" H3 7/8" 13 5/8 fl oz	6
	100	Oval baker 34 cm 13"	FT317-WHI	White	33.6 x 25.8 H7.5 cm 250 cl 13 1/4" x 10 1/8" H3" 84 1/2 fl oz	1
	101	Square baker 27 cm 11"	FT318-WHI	White	26.7 x 26.7 H7.8 cm 219.4 cl 10 1/2" x 10 1/2" H3 1/8" 74 1/4 fl oz	1
	155	Pitcher 243 cl 82 fl oz	FT337-WHI	White	18.6 x 14.5 H26.1 cm 243 cl 7 3/8" x 5 3/4" H10 1/4" 82 1/4 fl oz	1
	129	Sauce/gravy boat 29 cl 10 fl oz	FT340-WHI	White	24.1 x 8.5 H9.7 cm 29.2 cl 9 1/2" x 3 3/8" H3 7/8" 9 7/8 fl oz	1
FRISO	35	Mug 41 cl 14 fl oz	FIC132-WHI	White	13.3 x 9.2 H10.9 cm 41 cl 5 1/4" x 3 5/8" H4 1/4" 13 7/8 fl oz	6
	23	Coffee cup and saucer 9 cl 3 fl oz	FICS02-WHI	White	D12.4 H5.3 cm 8.6 cl D4 7/8" H2" 2 7/8 fl oz	6
	101	Rect. baker 35 cm 14"	FIR351-WHI	White	34.9 x 26 H8.3 cm 401.8 cl 13 3/4" x 10 1/4" H3 1/4" 135 7/8 fl oz	1
GRESPRESSO	24 155	Espresso cup 7 cl 2 fl oz	LSC061-WHI	White	D6.5 H5.8 cm 7 cl D2 1/2" H2 1/4" 2 3/8 fl oz	6
GRESPRESSO ECOGRES	24	Espresso cup 7 cl 2 fl oz	1EXC063E-WCL	White Colombia	D6.6 H6 cm 7 cl D2 5/8" H2 3/8" 2 3/8 fl oz	6
GRESPRESSO NATURE	24	Lungo cup 19 cl 7 fl oz	LSC081-WNT	Natural-White	D8 H7.5 cm 19.1 cl D3 1/8" H3" 6 1/2 fl oz	6
	24	Espresso cup 7 cl 2 fl oz	2LSC062-WSN	Sand-White	D6.5 H5.8 cm 7 cl D2 1/2" H2 1/4" 2 3/8 fl oz	6
	24	Espresso cup 7 cl 2 fl oz	1LSC062-WSL	Slate-White	D6.5 H5.8 cm 7 cl D2 1/2" H2 1/4" 2 3/8 fl oz	6
IMPRESSIONS	23	Coffee cup and saucer 9 cl 3 fl oz	IM505-WHI	White	D14 H6.2 cm 9 cl D5 1/2" H2 1/2" 3 fl oz	6
	101	Oval baker 26 cm 10"	IM513-WHI	White	25.5 x 17.2 H5.2 cm 103 cl 10" x 6 3/4" H2" 34 7/8 fl oz	1
	101	Pie dish 30 cm 12"	IM517-WHI	White	D29.8 H4.2 cm 185 cl D11 3/4" H1 5/8" 62 1/2 fl oz	1
	98	Cov. rect. casserole 185 cl 63 fl oz	IM525-WHI	White	32.3 x 18.4 H13.8 cm 185 cl 12 3/4" x 7 1/4" H5 3/8" 62 1/2 fl oz	1
LAGOA	35	Mug 31 cl 11 fl oz	LOC131-MTL	Metal	13 x 9.5 H10 cm 31.1 cl 5 1/8" x 3 3/4" H3 7/8" 10 1/2 fl oz	6
	23	Coffee cup and saucer 9 cl 3 fl oz	LOCS03-MTL	Metal	D12.5 H6.5 cm 8.6 cl D4 7/8" H2 1/2" 2 7/8 fl oz	6
LIVIA	35	Mug 36 cl 12 fl oz	GOC131-WHI	White	14 x 10.3 H7.6 cm 36.3 cl 5 1/2" x 4" H3" 12 1/4 fl oz	6

COLLECTION	PAGE	ITEM	REFERENCE	COLOR	DIMENSIONS	PACK
LIVIA	15	Serving bowl 26 cm 10"	IOS261-CHM	Champagne Yellow	D26.3 H12.5 cm 339.5 cl D10 3/8" H4 7/8" 114 3/4 fl oz	1
LUZIA	35	Mug 34 cl 11 fl oz	PEC132-CLW	Cloud White	13 x 9 H11.5 cm 33.5 cl 5 1/8" x 3 1/2" H4 1/2" 11 3/8 fl oz	6
	100	Oct. baker 22 cm 9"	PER221-CLW	Cloud White	22.3 x 15.9 H5.8 cm 100 cl 8 3/4" x 6 1/4" H2 1/4" 33 7/8 fl oz	1
MADEIRA	35	Mug 44 cl 15 fl oz	DEC144-GRY	Grey	13.7 x 10 H10.8 cm 44 cl 5 3/8" x 3 7/8" H4 1/4" 14 7/8 fl oz	6
	23	Coffee cup and saucer 8 cl 3 fl oz	DECS04-GRY	Grey	D12 H6.6 cm 7.6 cl D4 3/4" H2 5/8" 2 5/8 fl oz	6
MADEIRA HARVEST	23	Coffee cup and saucer 9 cl 3 fl oz	MA227-CRM	Vanilla Crème	D9.6 H5.3 cm 9 cl D3 3/4" H2 1/8" 3 fl oz	6
	101	Square ramekin 9 cm 4"	MA207-CRM	Vanilla Crème	9.2 x 9.2 H4.7 cm 11 cl 3 5/8" x 3 5/8" H1 7/8" 3 3/4 fl oz	6
	98	Oval gratin 25 cm 10"	MA252-CRM	Vanilla Crème	25.1 x 13.5 H4.7 cm 38 cl 9 7/8" x 5 3/8" H1 7/8" 12 7/8 fl oz	1
MARRAKESH	81	Fruit bowl 12 cm 5"	2VGS121-SBL	Sable Noir	D12 H5 cm 27 cl D4 3/4" H2" 9 1/8 fl oz	6
	35	Mug 44 cl 15 fl oz	2BLC141-SBL	Sable Blanc	13.5 x 9.8 H10.9 cm 43.5 cl 5 3/8" x 3 7/8" H4 1/4" 14 3/4 fl oz	6
	100	Cov. casserole 15 cm 6"	2VGH151-SBL	Sable Blanc	D15.2 H8.5 cm 50 cl D6" H3 3/8" 16 7/8 fl oz	6
MODERN STORAGE	55	Onion cellar w/ smoked cork lid 28 cm 11"	JPX281-WHI	White	D28 H16 cm 585 cl D11" H6" 197 3/4 fl oz	1
	54	Garlic canister w/ smoked cork lid 14 cm 5"	JPX141-WHI	White	D11.5 H13.9 cm 98 cl D4 1/2" H5 1/2" 33 1/8 fl oz	1
	57	Salt cellar w/ smoked cork lid 14 cm 5"	JPX101-WHI	White	D10.2 H5.5 cm 22 cl D4" H2 1/8" 7 1/2 fl oz	1
	57	Lid/sponge holder 10 cm 3"	JPD102-WHI	White	10.2 x 9.7 H7.5 cm 4" x 3 7/8" H3"	1
NÓTOS	24	Cup 27 cl 9 fl oz	NRC111-DNP	Dune Path	D8.1 H10.6 cm 27 cl D3 1/4" H4 1/8" 9 1/8 fl oz	6
	24	Cup 16 cl 5 fl oz	NRC083-DNP	Dune Path	D7.6 H7 cm 16 cl D3" H2 3/4" 5 3/8 fl oz	6
	24	Cup 7 cl 3 fl oz	NRC061-DNP	Dune Path	D6 H6.1 cm 7.4 cl D2 3/8" H2 3/8" 2 1/2 fl oz	6
	15	Teapot 50 cl 17 fl oz	NRX191-DNP	Dune Path	18.5 x 12.5 H10.2 cm 50 cl 7 1/4" x 4 7/8" H4" 16 7/8 fl oz	1
PACIFICA	35	Mug 33 cl 11 fl oz	XOC121-VAN	Vanilla	11.8 x 8.8 H9.1 cm 33 cl 4 5/8" x 3 1/2" H3 5/8" 11 1/8 fl oz	6
	43	Tea cup and saucer 22 cl 7 fl oz	XOCS01-CHS	Chestnut	D16 H6.2 cm 21.5 cl D6 1/4" H2 1/2" 7 1/4 fl oz	6
	23	Coffee cup and saucer 7 cl 2 fl oz	XOCS05-CHS	Chestnut	D12 H6 cm 7 cl D4 3/4" H2 3/8" 2 3/8 fl oz	6
	57	Salt cellar w/ wood lid 15 cl 5 fl oz	XOX092-SEE	Seed Grey	D9.2 H5.7 cm 15 cl D3 5/8" H2 1/4" 5 1/8 fl oz	1
	43	Oval platter 41 cm 16"	SOA411-CHS	Chestnut	40.8 x 26.3 H4.5 cm 16 1/8" x 10 3/8" H1 3/4"	1

COLLECTION	PAGE	ITEM	REFERENCE	COLOR	DIMENSIONS	PACK
STACKED ORGANIC	101	Bird 9 cm 4"	1LSD091-CRM	Cremini	6.8 x 3.5 H9.3 cm 2 5/8" x 1 3/8" H3 5/8"	6
THE NUTCRACKER	133	3 Plate holder	O30175-MTB	Metallic Brown	27.8 x 27.5 H47.5 cm 10 7/8" x 11" H18 3/4"	1
VERMONT	23	Coffee cup and saucer 7 cl 2 fl oz	XOCS05-CRM	Cream	D12 H6 cm 7 cl D4 3/4" H2 3/8" 2 3/8 fl oz	6

FLATWARE

COLLECTION	PAGE	ITEM	REFERENCE	COLOR	PACK
CHEESE KNIVES	133	Set 3 cheese knives	C20663-BRS	Brushed	1
MITO	15	Flatware 5 pieces	C20454-WDN	Wood	1
	75	Flatware 5 pieces	C20420-BLK	Black	1
PACIFICA	43	Flatware 5 pieces	C20560-BRU	Brushed	1
PICO	54	Flatware 5 pieces	C20744-BLK	Black	1
PRADO	155	Flatware 5 pieces	C20661-VTG	Vintage Gold	1
SAGA	81	Flatware 5 pieces	C20267-MAT	Matte	1
	129	Flatware 5 pieces	C20411-BLK	Black Matte	1
STEAK KNIVES	98	Set 4 Maple steak knives	C20705-POL	Polished	1

GLASSWARE

COLLECTION	PAGE	ITEM	REFERENCE	COLOR	DIMENSIONS	PACK
ACAPULCO	81 129	Red wine glass 55 cl 19 fl oz	V10371-GRN	Green	D8.5 H23.5 cm 55 cl D3 3/8" H9 1/4" 18 5/8 fl oz	6
	81 129	Tumbler 60 cl 20 fl oz	V10369-GRN	Green	D8 H15 cm 60 cl D3 1/8" H5 7/8" 20 1/4 fl oz	6
ALICE	75	Red wine glass 48 cl 17 fl oz	V10310-CLR	Clear	D10 H23.5 cm 47.5 cl D4" H9 1/4" 16 3/4 fl oz	6
	75	White wine glass 38 cl 13 fl oz	V10311-CLR	Clear	D8.5 H22.5 cm 38 cl D3 3/8" H8 7/8" 12 7/8 fl oz	6
BAGA	133	Decanter 180 cl 61 fl oz	V10247-CLR	Clear	D23.5 H26 cm 180 cl D9 1/4" H10 1/4" 60 7/8 fl oz	1
COUPOLE	55 133	Glass dome 25 cm 10"	V10243-CLR	Clear	D24.8 H19.4 cm D9 3/4" H7 5/8"	1
GOMOS	99	Water glass 28 cl 10 fl oz	V10337-BLS	Blush	D9 H13.5 cm 28 cl D3 1/2" H5 3/8" 9 1/2 fl oz	6
	15 99	Water glass 28 cl 10 fl oz	V10338-BRN	Smoked Brown	D9 H13.5 cm 28 cl D3 1/2" H5 3/8" 9 1/2 fl oz	6
MARGARIDA	43	Tumbler 67 cl 23 fl oz	V10264-GRN	Green	D9 H14 cm 67 cl D3 1/2" H5 1/2" 22 5/8 fl oz	6
	43	Tumbler 38 cl 13 fl oz	V10265-GRN	Green	D9 H10 cm 38 cl D3 1/2" H3 7/8" 12 7/8 fl oz	6
MARISA	55	Tumbler 67 cl 23 fl oz	V10267-GRN	Green	D9 H14 cm 67 cl D3 1/2" H5 1/2" 22 5/8 fl oz	6
RIVA	89	Wine glass 28 cl 9 fl oz	CFV0079-CLR	Clear	D9 H15 cm 26 cl D3 1/2" H5 7/8" 8 3/4 fl oz	6

COLLECTION	PAGE	ITEM	REFERENCE	COLOR	DIMENSIONS	PACK
RIVIERA	23	Coffee cup and saucer 8 cl 3 fl oz	ATCS04-FRT	Fôrets	D12.5 H6.4 cm 8 cl D4 7/8" H2 1/2" 2 3/4 fl oz	6
	15	Pitcher 165 cl 56 fl oz	SLZ281-SBN	Sable Noir	D15.2 H27.7 cm 165 cl D6" H10 7/8" 55 3/4 fl oz	1
	89	Diabolo vase soy wax candle 19 cm 8"	DCV191-BSN	Black-Sable Noir	18.6 x 7.6 H18.3 cm 137.7 cl 7 3/8" x 3" H7 1/4" 46 1/2 fl oz	1
RODA	23	Coffee cup 8 cl 3 fl oz	RTC081-ARD	Ardósia	7.7 x 5.9 H6.1 cm 7.8 cl 3" x 2 3/8" H2 3/8" 2 5/8 fl oz	6
	23	Coffee saucer 11 cm 4"	RTP111-ARD	Ardósia	D10.8 H1.5 cm D4 1/4" H5/8"	6
SARDEGNA	99	Appetizer plate 16 cm 6"	SD704-WBL	White-Cagliari Blue	D16.2 H2.4 cm D6 3/8" H1"	6
	100	Rect. baker 40 cm 16"	SD739-WHI	White	40.2 x 27.4 H10.7 cm 313 cl 15 7/8" x 10 3/4" H4 1/4" 105 7/8 fl oz	1
	99	Square baker 26 cm 11"	SD737-WHI	White	26.6 x 21.1 H9.5 cm 141.5 cl 10 1/2" x 8 1/4" H3 3/4" 47 7/8 fl oz	1
	101	Oval baker 32 cm 13"	SD735-WHI	White	32.4 x 18.5 H7.8 cm 96.5 cl 12 3/4" x 7 1/4" H3 1/8" 32 5/8 fl oz	1
	99	Oval platter 46 cm 18"	SD745-WBL	White-Cagliari Blue	45.9 x 30.9 H4.7 cm 18 1/8" x 12 1/8" H1 7/8"	1
SCOTIA	99	Salt pig/cellar 28 cl 10 fl oz	2KSD141-WHI	White	D12 H13.5 cm 28 cl D4 3/4" H5 3/8" 9 1/2 fl oz	1
	101	Rect. baker 26 cm 10"	2KSR262E-CRY	Crystal	25.6 x 14.2 H7.3 cm 109 cl 10 1/8" x 5 5/8" H2 7/8" 36 7/8 fl oz	1
	101	Square baker 24 cm 10"	2KSQ242E-WHI	White	24.3 x 24.3 H7.3 cm 214 cl 9 5/8" x 9 5/8" H2 7/8" 72 3/8 fl oz	1
STACKED ORGANIC	81	Dinner plate 27 cm 11"	1COP271E-PRT	Port	D26.7 H2.9 cm D10 1/2" H1 1/8"	6
	75	Oval plate 20 cm 8"	1GOP201E-PRT	Port	20.3 x 15.8 H2.5 cm 8" x 6 1/4" H1"	6
	81	Oval plate 20 cm 8"	1GOP201E-SEA	Deep Sea	20.3 x 15.8 H2.5 cm 8" x 6 1/4" H1"	6
	81	Soup/pasta bowl 23 cm 9"	1GOP231E- CRM	Cremini	D23.4 H5.5 cm 92.3 cl D9 1/4" H2 1/8" 31 1/4 fl oz	6
	54	Soup/cereal bowl 15 cm 6"	1IOS153-PRT	Port	D15.2 H8 cm 65 cl D6" H3 1/8" 22 fl oz	6
	35	Mug 36 cl 12 fl oz	1GOC131-CRM	Cremini	14 x 10.3 H7.6 cm 36.3 cl 5 1/2" x 4" H3" 12 1/4 fl oz	6
	81	Mug 36 cl 12 fl oz	1GOC131-SLT	Salt	14 x 10.3 H7.6 cm 36.3 cl 5 1/2" x 4" H3" 12 1/4 fl oz	6
	75	Serving bowl 37 cm 14"	1GOS371E- CRM	Cremini	D36.6 H6.7 cm 333 cl D14 3/8" H2 5/8" 112 5/8 fl oz	1
	54	Oval baker 30 cm 12"	1LSA301E-SLT	Salt	30.4 x 22.3 H7.5 cm 240 cl 12" x 8 3/4" H3" 81 1/8 fl oz	1
	100	Oval baker 26 cm 10"	1LSA251E-SLT	Salt	25.6 x 18.3 H6.8 cm 143.5 cl 10 1/8" x 7 1/4" H2 5/8" 48 1/2 fl oz	1
	55	Footed plate 27 cm 11"	1LOP275E-SKY	Sky	D27.2 H12 cm D10 3/4" H4 3/4"	1
	81	Footed plate 27 cm 11"	1LOP275E-SLT	Salt	D27.2 H12 cm D10 3/4" H4 3/4"	1
	55 101	Pie dish 27 cm 10"	1ET271E-CRM	Cremini	D26.7 H5.5 cm 124 cl D10 1/2" H2 1/8" 41 7/8 fl oz	1

COLLECTION	PAGE	ITEM	REFERENCE	COLOR	DIMENSIONS	PACK
STACKED ORGANIC	101	Bird 9 cm 4"	1LSD091-CRM	Cremini	6.8 x 3.5 H9.3 cm 2 5/8" x 1 3/8" H3 5/8"	6
THE NUTCRACKER	133	3 Plate holder	O30175-MTB	Metallic Brown	27.8 x 27.5 H47.5 cm 10 7/8" x 11" H18 3/4"	1
VERMONT	23	Coffee cup and saucer 7 cl 2 fl oz	XOCS05-CRM	Cream	D12 H6 cm 7 cl D4 3/4" H2 3/8" 2 3/8 fl oz	6

FLATWARE

COLLECTION	PAGE	ITEM	REFERENCE	COLOR	PACK
CHEESE KNIVES	133	Set 3 cheese knives	C20663-BRS	Brushed	1
MITO	15	Flatware 5 pieces	C20454-WDN	Wood	1
	75	Flatware 5 pieces	C20420-BLK	Black	1
PACIFICA	43	Flatware 5 pieces	C20560-BRU	Brushed	1
PICO	54	Flatware 5 pieces	C20744-BLK	Black	1
PRADO	155	Flatware 5 pieces	C20661-VTG	Vintage Gold	1
SAGA	81	Flatware 5 pieces	C20267-MAT	Matte	1
	129	Flatware 5 pieces	C20411-BLK	Black Matte	1
STEAK KNIVES	98	Set 4 Maple steak knives	C20705-POL	Polished	1

GLASSWARE

COLLECTION	PAGE	ITEM	REFERENCE	COLOR	DIMENSIONS	PACK
ACAPULCO	81 129	Red wine glass 55 cl 19 fl oz	V10371-GRN	Green	D8.5 H23.5 cm 55 cl D3 3/8" H9 1/4" 18 5/8 fl oz	6
	81 129	Tumbler 60 cl 20 fl oz	V10369-GRN	Green	D8 H15 cm 60 cl D3 1/8" H5 7/8" 20 1/4 fl oz	6
ALICE	75	Red wine glass 48 cl 17 fl oz	V10310-CLR	Clear	D10 H23.5 cm 47.5 cl D4" H9 1/4" 16 3/4 fl oz	6
	75	White wine glass 38 cl 13 fl oz	V10311-CLR	Clear	D8.5 H22.5 cm 38 cl D3 3/8" H8 7/8" 12 7/8 fl oz	6
BAGA	133	Decanter 180 cl 61 fl oz	V10247-CLR	Clear	D23.5 H26 cm 180 cl D9 1/4" H10 1/4" 60 7/8 fl oz	1
COUPOLE	55 133	Glass dome 25 cm 10"	V10243-CLR	Clear	D24.8 H19.4 cm D9 3/4" H7 5/8"	1
GOMOS	15 99	Water glass 28 cl 10 fl oz	V10337-BLS	Blush	D9 H13.5 cm 28 cl D3 1/2" H5 3/8" 9 1/2 fl oz	6
	99	Water glass 28 cl 10 fl oz	V10338-BRN	Smoked Brown	D9 H13.5 cm 28 cl D3 1/2" H5 3/8" 9 1/2 fl oz	6
MARGARIDA	43	Tumbler 67 cl 23 fl oz	V10264-GRN	Green	D9 H14 cm 67 cl D3 1/2" H5 1/2" 22 5/8 fl oz	6
	43	Tumbler 38 cl 13 fl oz	V10265-GRN	Green	D9 H10 cm 38 cl D3 1/2" H3 7/8" 12 7/8 fl oz	6
MARISA	55	Tumbler 67 cl 23 fl oz	V10267-GRN	Green	D9 H14 cm 67 cl D3 1/2" H5 1/2" 22 5/8 fl oz	6
RIVA	89	Wine glass 28 cl 9 fl oz	CFV0079-CLR	Clear	D9 H15 cm 26 cl D3 1/2" H5 7/8" 8 3/4 fl oz	6

COLLECTION	PAGE	ITEM	REFERENCE	COLOR	DIMENSIONS	PACK
SENSA	155	Red wine glass 40 cl 14 fl oz	CFV0074-CGD	Clear w/ golden rim	D10 H20 cm 40 cl D3 7/8" H7 7/8" 13 1/2 fl oz	6
	155	White wine glass 25 cl 9 fl oz	CFV0075-CGD	Clear w/ golden rim	D8 H19 cm 25 cl D3 1/8" H7 1/2" 8 1/2 fl oz	6
	133	Flute 22 cl 8 fl oz	CFV0072-CLR	Clear	D7 H23 cm 22 cl D2 3/4" H9" 7 1/2 fl oz	6
	155	Flute 22 cl 8 fl oz	CFV0076-CGD	Clear w/ golden rim	D7 H23 cm 22 cl D2 3/4" H9" 7 1/2 fl oz	6
	133	Tumbler 30 cl 10 fl oz	CFV0073-CLR	Clear	D9 H9 cm 30 cl D3 1/2" H3 1/2" 10 1/8 fl oz	6
	155	Tumbler 30 cl 10 fl oz	CFV0077-CGD	Clear w/ golden rim	D9 H9 cm 30 cl D3 1/2" H3 1/2" 10 1/8 fl oz	6
TINTA	133	Decanter 160 cl 54 fl oz	V10248-CLR	Clear	D16 H27 cm 160 cl D6 1/4" H10 5/8" 54 1/8 fl oz	1
TOSCA	54	Pitcher 150 cl 51 fl oz	V10255-GRN	Green	D12 H24 cm 150 cl D4 3/4" H9 1/2" 51 fl oz	1
VINE	133	White wine glass 38 cl 13 fl oz	V10229-CLR	Clear	D6 H20 cm 37.8 cl D2 3/8" H7 7/8" 12 7/8 fl oz	6
	133	Tumbler 33 cl 11 fl oz	V10231-CLR	Clear	D7 H10 cm 33 cl D2 3/4" H3 7/8" 11 1/8 fl oz	6

LINENS

COLLECTION	PAGE	ITEM	REFERENCE	COLOR	DIMENSIONS	PACK
CARMELA	57	Kitchen apron 100% LI	TX0248-CACC	Caramel-Cream	78 x 71 cm 30 6/8" x 28"	2
	98	Kitchen apron 100% LI	TX0250-CACL	Caramel	78 x 71 cm 30 6/8" x 28"	2
	55	Kitchen towel 100% LI	TX0254-CACB	Cream-Blue	70 x 50 cm 27 1/2" x 16 5/8"	2
	57	Kitchen towel 100% LI	TX0255-CACL	Caramel	70 x 50 cm 27 1/2" x 16 5/8"	2
	89	Kitchen towel 100% LI	TX0257-CACR	Cream	70 x 50 cm 27 1/2" x 16 5/8"	2
	99	Kitchen towel 100% LI	TX0252-CAAB	Amber-Brown	70 x 50 cm 27 1/2" x 16 5/8"	2
CAROLINA	15	Napkin 50% LI 50% CO	CFT0097-CRCA	Caramel	47 x 47 cm 18 1/2" x 18 1/2"	2
	15 155	Napkin 50% LI 50% CO	CFT0098-CRWC	White-Caramel	47 x 47 cm 18 1/2" x 18 1/2"	2
TERRY STRIPES	54	Kitchen towel terry 100% CO	CFT0102-CBL	Caramel-Blueberry	70 x 50 cm 27 1/2" x 16 5/8"	2
MARIA	81	Napkin 100% LI	TX0184-OLI	Olive	47 x 47 cm 18 1/2" x 18 1/2"	2
	81 129	Napkin 100% LI	TX0182-KAK	Khaki	47 x 47 cm 18 1/2" x 18 1/2"	2

HOST COMPLEMENTS

COLLECTION	PAGE	ITEM	REFERENCE	COLOR	DIMENSIONS	PACK
CORK	54	Cork trivet w/ leather handle 25 cm 10"	CFO0019-NT	Natural	D25 H2 cm D9 7/8" H3/4"	2
WOOD	55	Spatula	CFO0032-BEE	Beechwood	30 x 8 H1 cm 11 3/4" x 3 1/8" H3/8"	6
	55	Fork	CFO0031-BEE	Beechwood	30 x 8 H1 cm 11 3/4" x 3 1/8" H3/8"	6
	55	Spoon	CFO0028-BEE	Beechwood	30 x 8 H1 cm 11 3/4" x 3 1/8" H3/8"	6
	54	French rolling pin w/ ceramic edges	KSDS02-BEE	Beechwood	D5 L55 cm D2" L22"	1
	98	Round cutting/serving board w/ handle 43 cm 17"	O30190-OAK	Oak Wood	43 x 34 H2.2 cm 17" x 13 3/8" H7/8"	1
	133	Round cutting/serving board w/ handle 40 cm 16"	O30243-OAK	Oak Wood	40 x 30 H2.2 cm 15 3/4" x 11 3/4" H7/8"	1
	57	Cutting/serving board w/ handle 42 cm 17"	O30186-OAK	Oak Wood	42 x 18 H2.2 cm 16 1/2" x 7 1/8" H7/8"	1
NAPKIN RINGS HORN	129	Set 4 napkin rings	O30330-CML	Camel	D5 H4.5 cm D2" H1 3/4"	1
	89 155	Set 4 napkin rings	O30329-GRY	Dark Grey	D5 H4.5 cm D2" H1 3/4"	1
NAPKIN RINGS WOOD	81	Set 4 napkin rings square	O30327-NAT	Natural	5 x 5 H3.6 cm 2" x 2" H1 3/8"	1
	133	Set 4 napkin rings round spiral	O30326-DRK	Dark Wood	D5 H3.6 cm D2" H1 3/8"	1
JOANA	43	Placemat 100% Recycled Cotton	CFT0105-WBK	White-Black	40 x 30 cm 11 3/4" x 15 3/4"	2

COSTA NOVA STORES

LISBOA

Rua Castilho, 69, Lj. Esq., 1250-068 Lisboa
T: +351 210 991 777 | castilho@costanova.com

AVEIRO

Largo Mercado Manuel Firmino, Loja 2, 3800-223 Aveiro
T: +351 234 348 069 | aveiro@costanova.com

PORTO

Rua Sá da Bandeira, 650 (Edifício Emporium), 4000-226 Porto
T: +351 220 991 998 | porto@costanova.com

COSTA NOVA FACTORY OUTLET

Zona Industrial de Vagos, Lote 31, 3840-385 Vagos
T: +351 234 023 295 | outlet@grestel.pt

COSTA NOVA OFFICES

HEAD OFFICE PORTUGAL Zona Industrial de Vagos, Lote 78, 3840-385 Vagos, Portugal | **Phone:** +351 234 798 132
E-mail: info@costanova.com

US OFFICE COSTA NOVA 301 Fields Lane, Brewster, NY 10509, USA | **Phone:** (845)277-5700 | **E-mail:** office@costanova.com



COSTANOVA.COM